



ENCLOSURES

USF ENCLOSURES ONLY

TECHNE-TERM[®]



USF Series

cCSAus / ATEX / IEC Ex Certified

Ex tb / AEx tb Zone 21 IIIC
T80°C/T100°C/T130°C Db

Enclosure Type 3, 4 & 4X IP66
Report No. 15.70013872



0518 II 2 G D

Ex e IIC Gb

Ex tb IIIC Db IP66

Service temperature -50°C to +135°C

IECEx SIR 14.0053U

SIRA 14ATEX3156U



FEATURES-SPECIFICATIONS

Applications

Panel builders and intergraders building equipment for use in hazardous , corrosive, wet, hose down, dust, dirty , for both hot and cold industrial applications

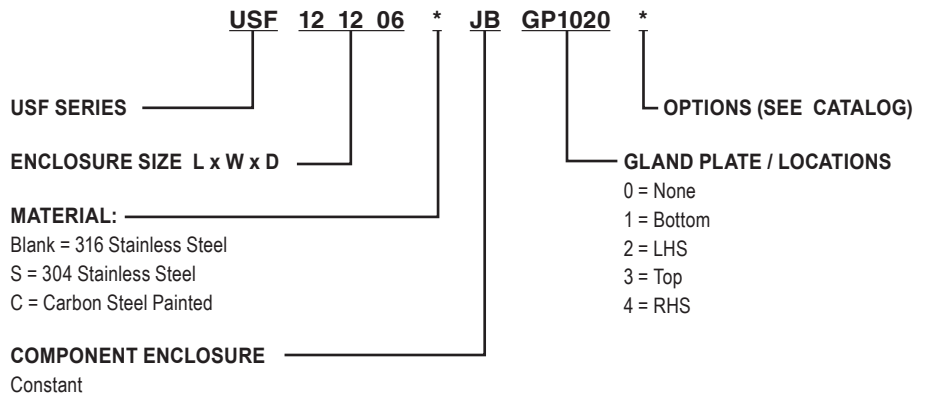
- Pulp & Paper Mills
- Breweries
- Electrical Power Plants
- Refineries
- Petrochemical Plants
- Chemical Plants
- Wastewater Treatment
- Grain Facilities
- Marine, Docks, Ports
- Coal Handling
- Off Shore Platforms
- Pumping Stations
- Textile manufacturing
- Food Processing

USF Enclosures Features—38 Sizes

- External slope top flange directs water, melting ice & snow and dust build up away from the opening side of the door.
- Continuous robot welded seams for a hose down tight seal.
- Concealed hinges with removable hinge pins.
- Doors are interchangeable and easily removable.
- Ground/earthing studs in both cover and through wall of the box.
- Quarter turn 316 stainless steel latch
- One piece high temperature closed cell

silicone gasket. With superior recovery and re-sealing properties.

- Sturdy 14 gauge box construction helps prevent bending or permanent deflection of the walls when field installing openings.
- Bi-directional removal mounting lugs for the widest flexibility during installations.
- Openings for glands or conduits factory or field installed—option for gland plates.





USF SLOPE FLANGE ENCLOSURE



CATALOG NUMBER	HEIGHT IN. (MM)	WIDTH	DEPTH	"E"	"F"	"G"	"H"	"A" GLAND PLATE	"B" GLAND PLATE	"C" GLAND PLATE	WEIGHT LBS (KG)
USF121206-JB	12 (305)	12 (305)	6 (153)	10.69 (272)	10.69 (272)	13.63 (346)	13.63 (346)	4.06 (103)	9.38 (238)	9.63 (245)	14 (6.3)
USF161206-JB	16 (407)	12 (305)	6 (153)	10.69 (272)	14.69 (373)	13.63 (346)	17.63 (448)	4.06 (103)	13.38 (340)	9.63 (245)	20 (9.1)
USF161208-JB	16 (407)	12 (305)	8 (203)	10.69 (272)	14.69 (373)	13.63 (346)	17.63 (448)	6.06 (154)	13.38 (340)	9.63 (245)	22 (10)
USF161210-JB	16 (407)	12 (305)	10 (254)	10.69 (272)	14.69 (373)	13.63 (346)	17.63 (448)	8.06 (205)	13.38 (340)	9.63 (245)	24 (10.9)
USF161606-JB	16 (407)	16 (407)	6 (153)	14.69 (373)	14.69 (373)	17.63 (448)	17.63 (448)	4.06 (103)	13.38 (340)	13.38 (340)	26 (11.8)
USF161608-JB	16 (407)	16 (407)	8 (203)	14.69 (373)	14.69 (373)	17.63 (448)	17.63 (448)	6.06 (154)	13.38 (340)	13.38 (340)	27 (12.2)
USF161610-JB	16 (407)	16 (407)	10 (254)	14.69 (373)	14.69 (373)	17.63 (448)	17.63 (448)	8.06 (205)	13.38 (340)	13.38 (340)	29 (13.2)
USF201606-JB	20 (508)	16 (407)	6 (153)	18.69 (475)	14.69 (373)	21.63 (549)	17.63 (448)	4.06 (103)	17.38 (441)	13.38 (340)	29 (13.2)
USF201608-JB	20 (508)	16 (407)	8 (203)	14.69 (373)	18.69 (475)	17.63 (448)	21.63 (549)	6.06 (154)	17.38 (441)	13.38 (340)	31 (14)
USF201610-JB	20 (508)	16 (407)	10 (254)	14.69 (373)	18.69 (475)	17.63 (448)	21.63 (549)	8.06 (205)	17.38 (441)	13.38 (340)	32 (14.5)
USF202006-JB	20 (508)	20 (508)	6 (153)	14.69 (373)	18.69 (475)	17.63 (448)	21.63 (549)	4.06 (103)	17.38 (441)	17.38 (441)	35 (15.9)
USF202008-JB	20 (508)	20 (508)	8 (203)	18.69 (475)	18.69 (475)	21.63 (549)	21.63 (549)	6.06 (154)	17.38 (441)	17.38 (441)	37 (16.8)
USF202010-JB	20 (508)	20 (508)	10 (254)	18.69 (475)	18.69 (475)	21.63 (549)	21.63 (549)	8.06 (205)	17.38 (441)	17.38 (441)	39 (17.7)
USF202012-JB	20 (508)	20 (508)	12 (305)	18.69 (475)	18.69 (475)	21.63 (549)	21.63 (549)	10.06 (255)	17.38 (441)	17.38 (441)	44 (20)
USF241606-JB	24 (610)	16 (407)	6 (153)	14.69 (373)	22.69 (576)	17.63 (448)	25.63 (651)	4.06 (103)	21.38 (543)	13.38 (340)	35 (15.9)
USF241608-JB	24 (610)	16 (407)	8 (203)	18.69 (475)	18.69 (475)	21.63 (549)	21.63 (549)	6.06 (154)	21.38 (543)	13.38 (340)	36 (16.3)
USF241610-JB	24 (610)	16 (407)	10 (254)	14.69 (373)	22.69 (576)	17.63 (448)	25.63 (651)	8.06 (205)	21.38 (543)	13.38 (340)	38 (17.2)
USF242006-JB	24 (610)	20 (508)	6 (153)	14.69 (373)	22.69 (576)	17.63 (448)	25.63 (651)	4.06 (103)	21.38 (543)	17.38 (441)	42 (19)
USF242008-JB	24 (610)	20 (508)	8 (203)	18.69 (475)	22.69 (576)	21.63 (549)	25.63 (651)	6.06 (154)	21.38 (543)	17.38 (441)	43 (19.5)
USF242010-JB	24 (610)	20 (508)	10 (254)	18.69 (475)	22.69 (576)	21.63 (549)	25.63 (651)	8.06 (205)	21.38 (543)	17.38 (441)	44 (20)
USF242012-JB	24 (610)	20 (508)	12 (305)	18.69 (475)	22.69 (576)	21.63 (549)	25.63 (651)	10.06 (255)	21.38 (543)	17.38 (441)	46 (20.9)
USF242406-JB	24 (610)	24 (610)	6 (153)	18.69 (475)	22.69 (576)	21.63 (549)	25.63 (651)	4.06 (103)	21.38 (543)	21.38 (543)	49 (22.2)
USF242408-JB	24 (610)	24 (610)	8 (203)	22.69 (576)	22.69 (576)	25.63 (651)	25.63 (651)	6.06 (154)	21.38 (543)	21.38 (543)	53 (24)
USF242410-JB	24 (610)	24 (610)	10 (254)	22.69 (576)	22.69 (576)	25.63 (651)	25.63 (651)	8.06 (205)	21.38 (543)	21.38 (543)	58 (26.3)
USF242412-JB	24 (610)	24 (610)	12 (305)	22.69 (576)	22.69 (576)	25.63 (651)	25.63 (651)	10.06 (255)	21.38 (543)	21.38 (543)	62 (28.1)
USF242416-JB	24 (610)	24 (610)	16 (407)	22.69 (576)	22.69 (576)	25.63 (651)	25.63 (651)	14.06 (357)	21.38 (543)	21.38 (543)	71 (32.2)
USF242420-JB	24 (610)	24 (610)	20 (508)	22.69 (576)	22.69 (576)	25.63 (651)	25.63 (651)	18.06 (458)	21.38 (543)	21.38 (543)	78 (35.4)
USF302008-JB	30 (762)	20 (508)	8 (203)	22.69 (576)	22.69 (576)	25.63 (651)	25.63 (651)	6.06 (154)	26.00 (660)	17.38 (441)	59 (26.8)
USF302010-JB	30 (762)	20 (508)	10 (254)	18.69 (475)	28.69 (729)	21.63 (549)	31.63 (803)	8.06 (205)	26.00 (660)	17.38 (441)	61 (27.7)
USF302408-JB	30 (762)	24 (610)	8 (203)	18.69 (475)	28.69 (729)	21.63 (549)	31.63 (803)	6.06 (154)	26.00 (660)	21.38 (543)	56 (25.4)
USF302410-JB	30 (762)	24 (610)	10 (254)	22.69 (576)	28.69 (729)	25.63 (651)	31.63 (803)	8.06 (205)	26.00 (660)	21.38 (543)	63 (28.6)
USF302412-JB	30 (762)	24 (610)	12 (305)	22.69 (576)	28.69 (729)	25.63 (651)	31.63 (803)	10.06 (255)	26.00 (660)	21.38 (543)	64 (29)
USF302420-JB	30 (762)	24 (610)	20 (508)	22.69 (576)	28.69 (729)	25.63 (651)	31.63 (803)	18.06 (458)	26.00 (660)	21.38 (543)	99 (45)
USF303008-JB	30 (762)	30 (762)	8 (203)	22.69 (576)	28.69 (729)	25.63 (651)	31.63 (803)	6.06 (154)	26.00 (660)	26.00 (660)	68 (30.8)
USF303010-JB	30 (762)	30 (762)	10 (254)	28.69 (729)	28.69 (729)	31.63 (803)	31.63 (803)	8.06 (205)	26.00 (660)	26.00 (660)	72 (32.7)
USF303012-JB	30 (762)	30 (762)	12 (305)	28.69 (729)	28.69 (729)	31.63 (803)	31.63 (803)	10.06 (255)	26.00 (660)	26.00 (660)	89 (40.4)
USF362408-JB	36 (915)	24 (610)	8 (203)	34.69 (881)	28.69 (729)	37.63 (956)	31.63 (803)	6.06 (154)	33.00 (838)	21.38 (543)	66 (30)
USF362410-JB	36 (915)	24 (610)	10 (254)	9.79 (249)	35.20 (894)	8.15 (207)	27.63 (702)	8.06 (205)	33.00 (838)	21.38 (543)	70 (31.8)

All dimension in. (mm)



ENCLOSURES

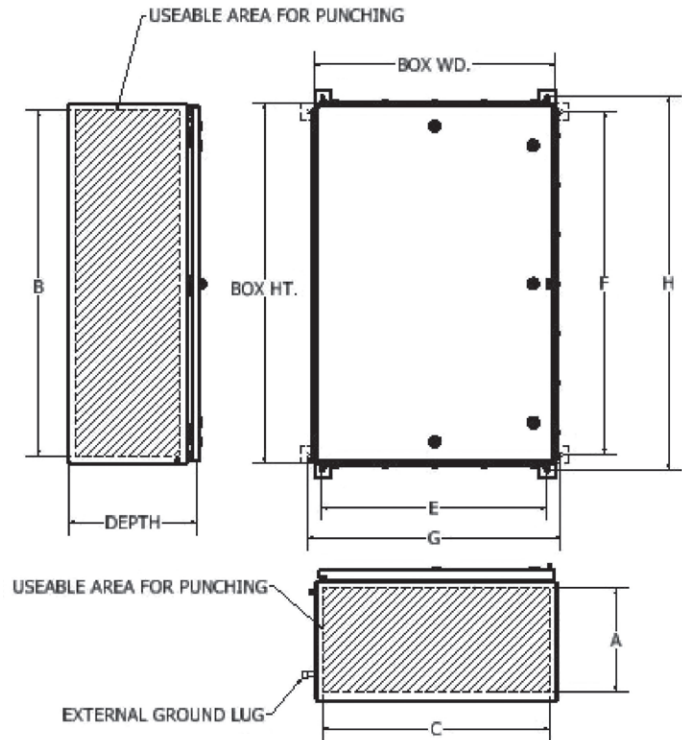
USF SLOPE FLANGE ENCLOSURE



CATALOG NUMBER	"A" BLANK WALL AREA	"B" BLANK WALL AREA	"C" BLANK WALL AREA	(W) MAX. POWER
USF121206-JB	5.74 (146)	10.93 (277)	10.93 (277)	15.0
USF161206-JB	5.74 (146)	14.93 (379)	10.93 (277)	17.0
USF161208-JB	7.74 (196)	14.93 (379)	10.93 (277)	20.6
USF161210-JB	9.74 (247)	14.93 (379)	10.93 (277)	23.5
USF161606-JB	5.74 (146)	14.93 (379)	14.93 (379)	19.0
USF161608-JB	7.74 (196)	14.93 (379)	14.93 (379)	20.0
USF161610-JB	9.74 (247)	14.93 (379)	14.93 (379)	25.0
USF201606-JB	5.74 (146)	18.93 (480)	14.93 (379)	21.0
USF201608-JB	7.74 (196)	18.93 (480)	14.93 (379)	23.0
USF201610-JB	9.74 (247)	18.93 (480)	14.93 (379)	26.0
USF202006-JB	5.74 (146)	18.93 (480)	18.93 (480)	24.3
USF202008-JB	7.74 (196)	18.93 (480)	18.93 (480)	26.0
USF202010-JB	9.74 (247)	18.93 (480)	18.93 (480)	30.0
USF202012-JB	11.74 (298)	18.93 (480)	18.93 (480)	36.0
USF241606-JB	5.74 (146)	22.93 (582)	14.93 (379)	35.0
USF241608-JB	7.74 (196)	22.93 (582)	14.93 (379)	36.0
USF241610-JB	9.74 (247)	22.93 (582)	14.93 (379)	31.0
USF242006-JB	5.74 (146)	22.93 (582)	18.93 (480)	24.5
USF242008-JB	7.74 (196)	22.93 (582)	18.93 (480)	31.5
USF242010-JB	9.74 (247)	22.93 (582)	18.93 (480)	33.6
USF242012-JB	11.74 (298)	22.93 (582)	18.93 (480)	36.0
USF242406-JB	5.74 (146)	22.93 (582)	22.93 (582)	25.8
USF242408-JB	7.74 (196)	22.93 (582)	22.93 (582)	34.0
USF242410-JB	9.74 (247)	22.93 (582)	22.93 (582)	34.0
USF242412-JB	11.74 (298)	22.93 (582)	22.93 (582)	38.0
USF242416-JB	15.74 (400)	22.93 (582)	22.93 (582)	42.0
USF242420-JB	19.74 (501)	22.93 (582)	22.93 (582)	57.3
USF302008-JB	7.74 (196)	28.93 (735)	18.93 (480)	36.5
USF302010-JB	9.74 (247)	28.93 (735)	18.93 (480)	36.0
USF302408-JB	7.74 (196)	28.93 (735)	22.93 (582)	39.0
USF302410-JB	9.74 (247)	28.93 (735)	22.93 (582)	38.0
USF302412-JB	11.74 (298)	28.93 (735)	22.93 (582)	40.0
USF302420-JB	19.74 (501)	28.93 (735)	22.93 (582)	57.3
USF303008-JB	7.74 (196)	28.93 (735)	28.93 (735)	43.0
USF303010-JB	9.74 (247)	28.93 (735)	28.93 (735)	40.0
USF303012-JB	11.74 (298)	28.93 (735)	28.93 (735)	46.0
USF362408-JB	7.74 (196)	34.93 (887)	22.93 (582)	44.0
USF362410-JB	9.74 (247)	34.93 (887)	22.93 (582)	40.0

All dimension in. (mm)

USF MAXIMUM CONDUIT / GLAND OPENINGS					
W/O GLAND PLATE			W/ GLAND PLATE		
BOX DEPTH	MAX NPT	MAX METRIC	BOX DEPTH	MAX NPT	MAX METRIC
6	3-1/2"	M100	6	2-1/2"	M75
8	4"	M100	8	4"	M100
10	4"	M100	10	4"	M100
12	4"	M100	12	4"	M100
16	4"	M100	16	4"	M100
20	4"	M100	20	4"	M100



See enclosure modification page for conduit / gland holes sizes and spacing.



USF SLOPE FLANGE ENCLOSURES

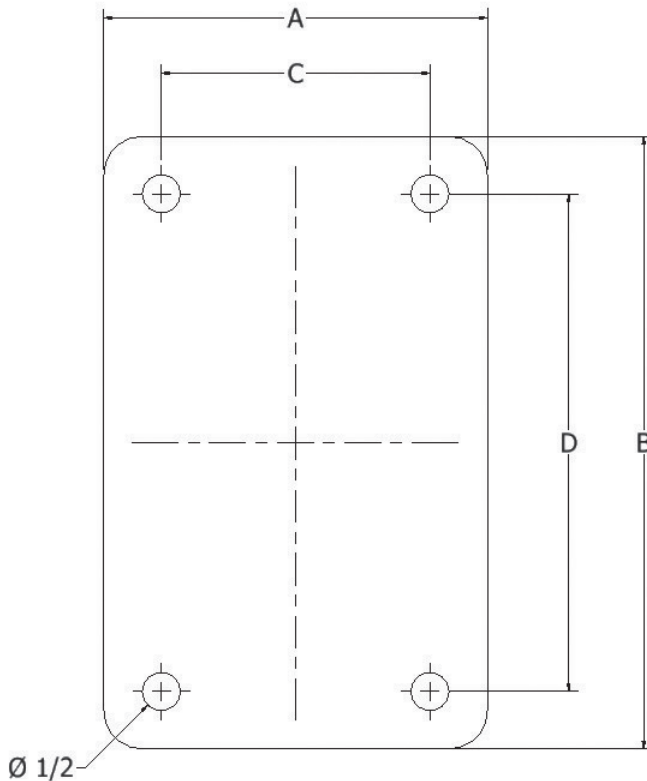
TECHNE-TERM[®]

USF SERIES INTERNAL MOUNTING PAN					
CATALOG NO.	A	B	C	D	THICKNESS
USF1212P	9.00 (229)	9.00 (229)	7.25 (184)	7.25 (184)	.13 (3.3)
USF1612P	9.00 (229)	13.00 (330)	7.25 (184)	11.25 (286)	.13 (3.3)
USF1616P	13.00 (330)	13.00 (330)	11.25 (286)	11.25 (286)	.13 (3.3)
USF2016P	13.00 (330)	17.00 (432)	11.25 (286)	15.25 (387)	.13 (3.3)
USF2020P	17.00 (432)	17.00 (432)	15.25 (387)	15.25 (387)	.13 (3.3)
USF2416P	13.00 (330)	21.00 (533)	11.25 (286)	19.25 (489)	.13 (3.3)
USF2420P	17.00 (432)	21.00 (533)	15.25 (387)	19.25 (489)	.13 (3.3)
USF2424P	21.00 (533)	21.00 (533)	19.25 (489)	19.25 (489)	.13 (3.3)
USF3020P	17.00 (432)	25.63 (651)	15.25 (387)	23.88 (606)	.13 (3.3)
USF3024P	21.00 (533)	25.63 (651)	19.25 (489)	23.88 (606)	.13 (3.3)
USF3030P	25.63 (651)	25.63 (651)	23.88 (606)	23.88 (606)	.13 (3.3)
USF3624P	21.00 (533)	32.63 (829)	19.25 (489)	30.88 (784)	.19 (4.8)

Internal mounting pans are made from high strength aluminum alloy. The aluminum alloy is corrosion resistance and can be drilled and tapped in the field for ease of installation of components.

Pans come standard with mounting hardware.

All dimension in. (mm)



SUFFIX NUMBER	DESCRIPTION
KIT-251	100 amp ground lug
KIT-252	225 amp ground lug
SU3-KDE	Class I Div. 2 Grps A, B, C & D, Type 4X. Ex e IIC Zone 1 IP 66 Drain & breather installed.
SU10-KDE	Class I Div. 2 Grps A, B, C & D, Type 4X. Ex e IIC Zone 1 IP 66 Drain only installed.
DC	Document Wallet (enclosures 10 x 10 and larger only)
SU9	Special paint finish
SU14	Fungus proofing of enclosures

See enclosure modification page for conduit / gland hole sizes and spacing.

ENCLOSURES

SJIC SERIES



SJIC ENCLOSURES ONLY • SCREW COVER

TECHNE-TERM®



SJIC Series

cCSAus / ATEX / IEC Ex Certified

Ex tb / AEx tb Zone 21 IIIC
T80°C/T100°C/T130°C Db



Enclosure Type 3, 4 & 4X IP66
Report No. 15.70013872

IECEX SIR 14.0053U
SIRA 14ATEX3156U

0518 II 2 G D

Ex e IIC Gb

Ex tb IIIC Db IP66

Service temperature -50°C to +135°C



FEATURES-SPECIFICATIONS

Applications

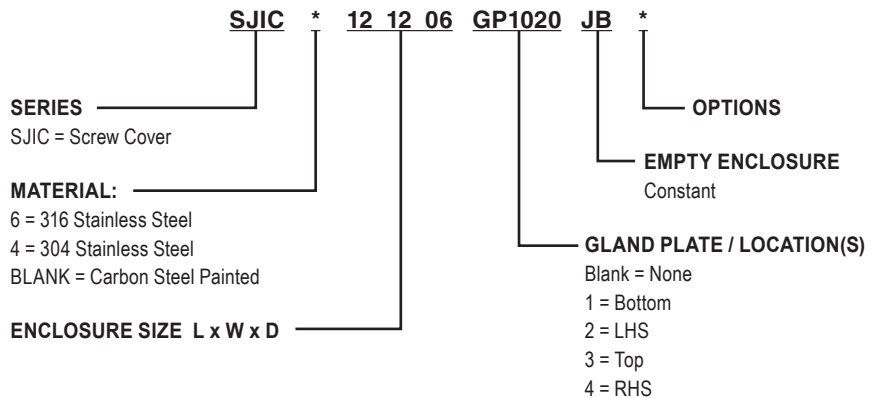
Panel builders and intergraders building equipment for use in hazardous , corrosive, wet, hose down, dust, dirty , for both hot and cold industrial applications.

- Pulp & Paper Mills
- Breweries
- Electrical Power Plants
- Refineries
- Petrochemical Plants
- Chemical Plants
- Wastewater Treatment
- Grain Facilities
- Marine, Docks, Ports
- Coal Handling
- Off Shore Platforms
- Pumping Stations
- Textile manufacturing
- Food Processing

- Screw covers 316 stainless steel
- Continuous robot welded seams for a hose down tight seal.
- SJIC doors are interchangeable and easily removable.
- Ground/earthing studs in both cover and through wall of the box.
- One piece high temperature closed cell silicone gasket. With superior recovery and re-sealing properties.

- Sturdy 14 gauge box construction helps prevent bending or permanent deflection of the walls when field installing openings.
- Welded one piece mounting flanges top and bottom for strength.
- Openings for glands or conduit

SJIC Enclosures Features—15 Sizes

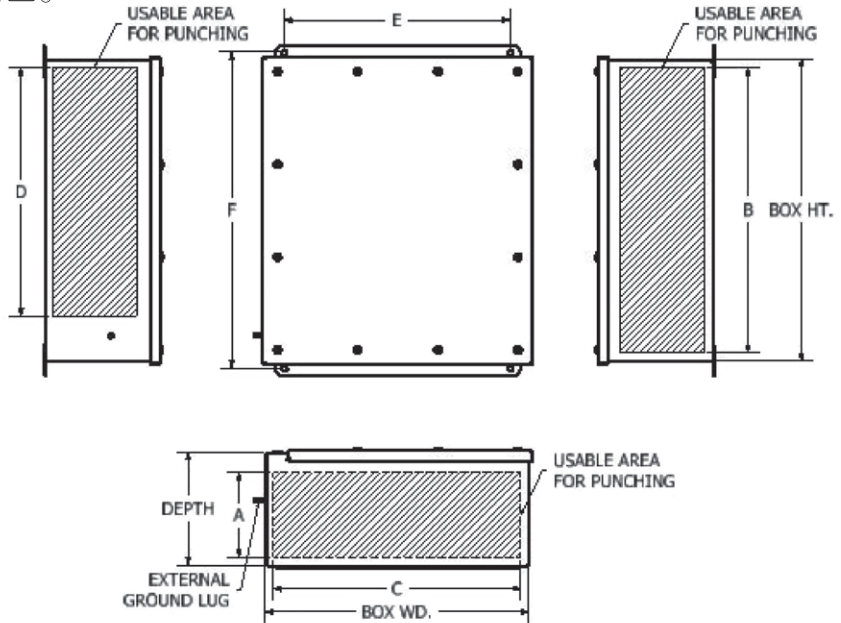




SJIC ENCLOSURES ONLY

TECHNE-TERM[®]

SUFFIX NUMBER	DESCRIPTION
KIT-251	100 amp ground lug
KIT-252	225 amp ground lug
SU3-KDE	Class I Div. 2 Grps A, B, C & D, Type 4X. Ex e IIC Zone 1 IP 66 Drain & breather installed.
SU10-KDE	Class I Div. 2 Grps A, B, C & D, Type 4X. Ex e IIC Zone 1 IP 66 Drain only installed.
DC	Document Wallet (enclosures 10 x 10 and larger only)
SU9	Special paint finish
SU14	Fungus proofing of enclosures



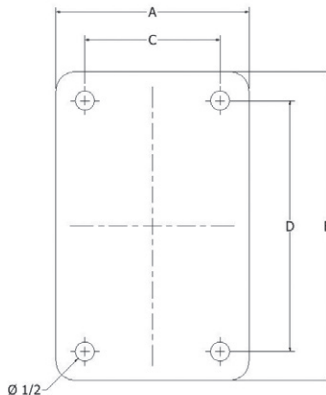
See enclosure modification page for conduit / gland hole sizes and spacing.

CATALOG NUMBER	HEIGHT IN. (MM)	WIDTH	DEPTH	"E"	"F"	"A" BLANK WALL	"B" BLANK WALL	"C" BLANK WALL	"D" BLANK WALL	(W) MAX. POWER	WEIGHT LBS (KG)
SJIC6040404-JB	4 (102)	4 (102)	4 (102)	2.00 (51)	4.75 (121)	2.47(63)	3.13 (79)	3.13 (79)	1.19 (30)	4.1	2.83 (1.3)
SJIC6060404-JB	6 (152)	4 (102)	4 (102)	2.00 (51)	6.75 (171)	2.47(63)	5.13 (130)	3.13 (79)	3.19 (81)	5.2	3.6 (1.6)
SJIC6060604-JB	6 (152)	6 (152)	4 (102)	4.00 (102)	6.75 (171)	2.47(63)	5.13 (130)	5.13 (130)	3.19 (81)	6.1	4.9 (2.2)
SJIC6060606-JB	6 (152)	6 (152)	6 (152)	4.00 (102)	6.75 (171)	4.47 (114)	5.13 (130)	5.13 (130)	3.19 (81)	8.4	5.9 (2.7)
SJIC6080606-JB	8 (203)	6 (152)	6 (152)	4.00 (102)	8.75 (222)	4.47 (114)	7.13 (181)	7.13 (181)	5.19 (132)	10.5	7.5 (3.4)
SJIC6080804-JB	8 (203)	8 (203)	4 (102)	6.00 (152)	8.75 (222)	2.47(63)	7.13 (181)	7.13 (181)	5.19 (132)	8.4	7.9 (3.6)
SJIC6080806-JB	8 (203)	8 (203)	6 (152)	6.00 (152)	8.75 (222)	4.47 (114)	7.13 (181)	7.13 (181)	5.19 (132)	11.4	8.33 (3.8)
SJIC6100804-JB	10 (254)	8 (203)	4 (102)	6.00 (152)	10.75 (273)	2.47(63)	9.13 (232)	7.13 (181)	7.19 (183)	8.4	9.5 (4.4)
SJIC6100806-JB	10 (254)	8 (203)	6 (152)	6.00 (152)	10.75 (273)	4.47 (114)	9.13 (232)	7.13 (181)	7.19 (183)	12.2	10 (4.5)
SJIC6101006-JB	10 (254)	10 (254)	6 (152)	8.00 (203)	10.75 (273)	4.47 (114)	9.13 (232)	9.13 (232)	7.19 (183)	13	11 (5)
SJIC6121005-JB	12 (305)	10 (254)	5 (127)	8.00 (203)	12.75 (324)	3.47 (88)	11.13 (283)	9.13 (232)	9.19 (233)	8.4	12 (5.4)
SJIC6121006-JB	12 (305)	10 (254)	6 (152)	8.00 (203)	12.75 (324)	4.47 (114)	11.13 (283)	9.13 (232)	9.19 (233)	14	13 (5.9)
SJIC6121206-JB	12 (305)	12 (305)	6 (152)	10.00 (254)	12.75 (324)	4.47 (114)	11.13 (283)	11.13 (283)	9.19 (233)	15	15 (6.8)
SJIC6141206-JB	14 (356)	12 (305)	6 (152)	10.00 (254)	14.75 (375)	4.47 (114)	13.13 (334)	11.13 (283)	11.19 (284)	16	16 (7.3)
SJIC6161406-JB	16 (406)	14 (356)	6 (152)	12 (305)	16.75 (425)	4.47 (114)	15.13 (384)	13.13 (334)	13.19 (335)	18	20 (9)

SJIC(H) SERIES INTERNAL MOUNTING PAN

CATALOG NO.	A	B	C	D	THICKNESS
SJIC1010P	7.63 (194)	7.63 (194)	7.00 (178)	7.00 (178)	.13 (3.2)
SJIC1210P	7.63 (194)	9.63 (244)	7.00 (178)	9.00 (228)	.13 (3.2)
SJIC1212P	9.63 (244)	9.63 (244)	9.00 (228)	9.00 (228)	.13 (3.2)
SJIC1412P	9.63 (244)	11.63 (295)	9.00 (228)	11.00 (279)	.13 (3.2)
SJIC1614P	11.63 (295)	13.63 (346)	11.00 (279)	13.00 (330)	.13 (3.2)

All dimension in. (mm)



Internal mounting pans are made from high strength aluminum alloy. The aluminum alloy is corrosion resistance and can be drill and tapped in the field for ease of installation of components.

Pans come standard with mounting hardware.

SJIC / SJCH MAXIMUM CONDUIT / GLAND OPENINGS					
W/O GLAND PLATE			W/ GLAND PLATE		
BOX DEPTH	MAX NPT	MAX METRIC	BOX DEPTH	MAX NPT	MAX METRIC
4	1"	M32	4	1/2"	M20
5	1-1/2"	M50	5	1-1/4"	M40
6	3"	M80	6	2"	M63

ENCLOSURES

SJICH SERIES



SJICH ENCLOSURES ONLY • HINGED SCREW COVER

TECHNE-TERM®



SJICH Series

cCSAus / ATEX / IEC Ex Certified

Ex tb / AEx tb Zone 21 IIIC
T80°C/T100°C/T130°C Db

Enclosure Type 3, 4 & 4X IP66

Report No. 15.70013872

IECEx SIR 14.0053U

SIRA 14ATEX3156U

0518 II 2 G D

Ex e IIC Gb

Ex tb IIIC Db IP66

Service temperature -50°C to +135°C



FEATURES-SPECIFICATIONS

Applications

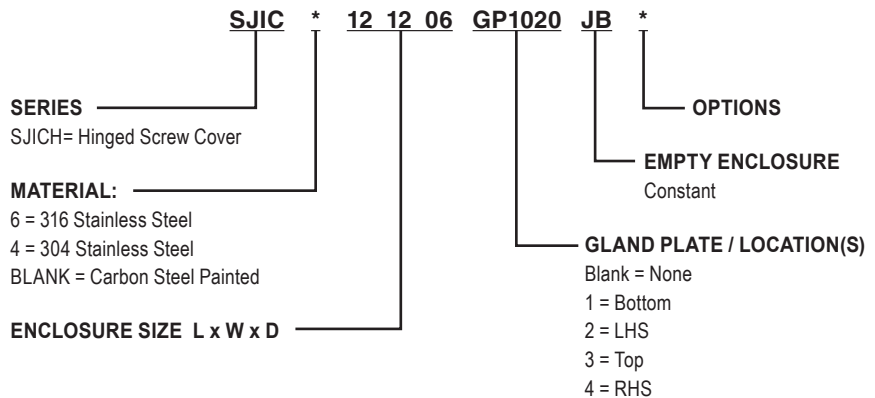
Panel builders and intergraders building equipment for use in hazardous , corrosive, wet, hose down, dust, dirty , for both hot and cold industrial applications.

- Pulp & Paper Mills
- Breweries
- Electrical Power Plants
- Refineries
- Petrochemical Plants
- Chemical Plants
- Wastewater Treatment
- Grain Facilities
- Marine, Docks, Ports
- Coal Handling
- Off Shore Platforms
- Pumping Stations
- Textile manufacturing
- Food Processing

- Screw covers 316 stainless steel
- Continuous robot welded seams for a hose down tight seal.
- SJICH have continuous one piece hinge construction.
- Ground/earthing studs in both cover and through wall of the box.
- One piece high temperature closed cell silicone gasket. With superior recovery and re-sealing properties.

- Sturdy 14 gauge box construction helps prevent bending or permanent deflection of the walls when field installing openings.
- Welded one piece mounting flanges top and bottom for strength.
- Openings for glands or conduit

SJICH Enclosures Features—11 Sizes

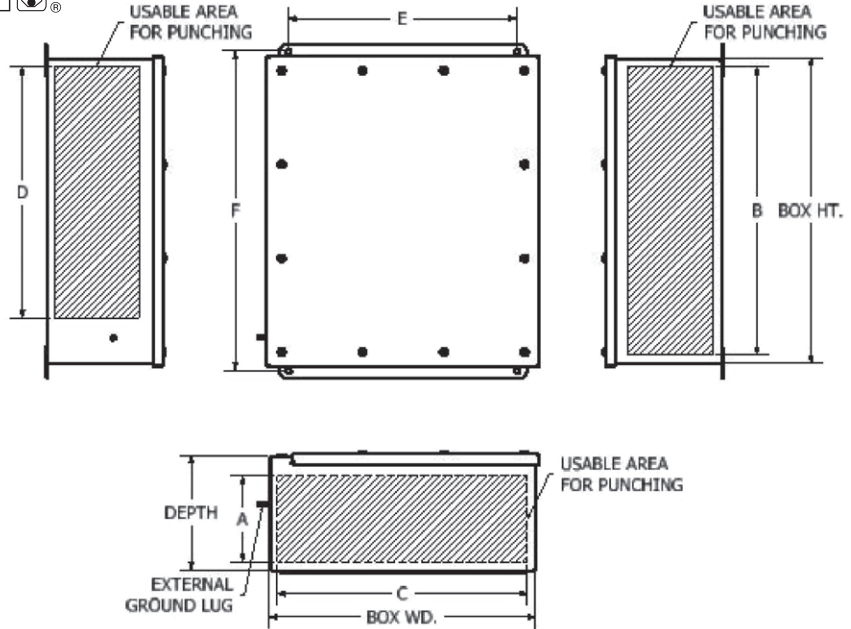




SJICH ENCLOSURES ONLY

TECHNE-TERM

SUFFIX NUMBER	DESCRIPTION
KIT-251	100 amp ground lug
KIT-252	225 amp ground lug
SU3-KDE	Class I Div. 2 Grps A, B, C & D, Type 4X. Ex e IIC Zone 1 IP 66 Drain & breather installed.
SU10-KDE	Class I Div. 2 Grps A, B, C & D, Type 4X. Ex e IIC Zone 1 IP 66 Drain only installed.
DC	Document Wallet (enclosures 10 x 10 and larger only)
SU9	Special paint finish
SU14	Fungus proofing of enclosures



See enclosure modification page for conduit / gland hole sizes and spacing.

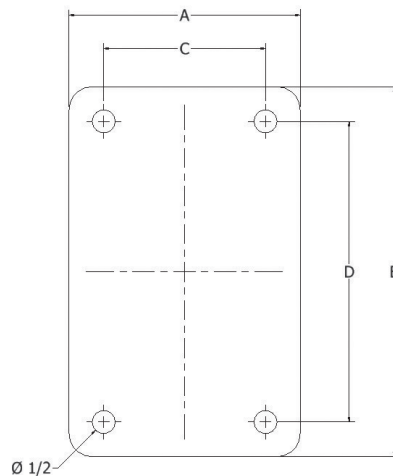
CATALOG NUMBER	HEIGHT IN. (MM)	WIDTH	DEPTH	"E"	"F"	"A" BLANK WALL	"B" BLANK WALL	"C" BLANK WALL	"D" BLANK WALL	(W) MAX. POWER	WEIGHT LBS (KG)
SJICH6080606-JB	8 (203)	6 (152)	6 (152)	4.00 (102)	8.75 (222)	4.47 (114)	7.13 (181)	7.13 (181)	5.19 (132)	10.5	7.5 (3.4)
SJICH6080804-JB	8 (203)	8 (203)	4 (102)	6.00 (152)	8.75 (222)	2.47(63)	7.13 (181)	7.13 (181)	5.19 (132)	8.4	7.9 (3.6)
SJICH6080806-JB	8 (203)	8 (203)	6 (152)	6.00 (152)	8.75 (222)	4.47 (114)	7.13 (181)	7.13 (181)	5.19 (132)	11.4	8.33 (3.8)
SJICH6100804-JB	10 (254)	8 (203)	4 (102)	6.00 (152)	10.75 (273)	2.47(63)	9.13 (232)	7.13 (181)	7.19 (183)	8.4	9.5 (4.4)
SJICH6100806-JB	10 (254)	8 (203)	6 (152)	6.00 (152)	10.75 (273)	4.47 (114)	9.13 (232)	7.13 (181)	7.19 (183)	12.2	10 (4.5)
SJICH6101006-JB	10 (254)	10 (254)	6 (152)	8.00 (203)	10.75 (273)	4.47 (114)	9.13 (232)	9.13 (232)	7.19 (183)	13	11 (5)
SJICH6121005-JB	12 (305)	10 (254)	5 (127)	8.00 (203)	12.75 (324)	3.47 (88)	11.13 (283)	9.13 (232)	9.19 (233)	8.4	12 (5.4)
SJICH6121006-JB	12 (305)	10 (254)	6 (152)	8.00 (203)	12.75 (324)	4.47 (114)	11.13 (283)	9.13 (232)	9.19 (233)	14	13 (5.9)
SJICH6121206-JB	12 (305)	12 (305)	6 (152)	10.00 (254)	12.75 (324)	4.47 (114)	11.13 (283)	11.13 (283)	9.19 (233)	15	15 (6.8)
SJICH6141206-JB	14 (356)	12 (305)	6 (152)	10.00 (254)	14.75 (375)	4.47 (114)	13.13 (334)	11.13 (283)	11.19 (284)	16	16 (7.3)
SJICH6161406-JB	16 (406)	14 (356)	6 (152)	12 (305)	16.75 (425)	4.47 (114)	15.13 (384)	13.13 (334)	13.19 (335)	18	20 (9)

SJIC(H) SERIES INTERNAL MOUNTING PAN					
CATALOG NO.	A	B	C	D	THICKNESS
SJIC1010P	7.63 (194)	7.63 (194)	7.00 (178)	7.00 (178)	.13 (3.2)
SJIC1210P	7.63 (194)	9.63 (244)	7.00 (178)	9.00 (228)	.13 (3.2)
SJIC1212P	9.63 (244)	9.63 (244)	9.00 (228)	9.00 (228)	.13 (3.2)
SJIC1412P	9.63 (244)	11.63 (295)	9.00 (228)	11.00 (279)	.13 (3.2)
SJIC1614P	11.63 (295)	13.63 (346)	11.00 (279)	13.00 (330)	.13 (3.2)

All dimension in. (mm)

Internal mounting pans are made from high strength aluminum alloy. The aluminum alloy is corrosion resistance and can be drill and tapped in the field for ease of installation of components.

Pans come standard with mounting hardware.



SJIC / SJCH MAXIMUM CONDUIT / GLAND OPENINGS					
W/O GROUND PLATE			W/ GROUND PLATE		
BOX DEPTH	MAX NPT	MAX METRIC	BOX DEPTH	MAX NPT	MAX METRIC
4	1"	M32	4	1/2"	M20
5	1-1/2"	M50	5	1-1/4"	M40
6	3"	M80	6	2"	M63

ENCLOSURES

USF/SJIC/SJICH SERIES



USF / SJIC / SJICH ENCLOSURES



TABLE 1: Minimum distance from edge of box to the center of the conduit / cable entry.

NPT (METRIC)	4"	3-1/2"	3" (M75)	2-1/2" (M63)	2" (M50)	1-1/2" (M40)	1-1/4" (M32)	1" (M25)	3/4" (M20)	1/2" (M16)
IN. (MM)	2-3/4 (70)	2-1/2 (64)	2 (51)	2 (51)	1-5/8 (41)	1-3/8 (35)	1-1/4 (32)	1 (25)	7/8 (22)	3/4 (19)

TABLE 2 Minimum distance from edge of gland plate to the center of the conduit / cable entry.

NPT (METRIC)	4" (M100)	3-1/2" (M80)	3" (M75)	2-1/2" (M63)	2" (M50)	1-1/2" (M40)	1-1/4" (M32)	1" (M25)	3/4" (M20)	1/2" (M16)
IN. (MM)	3-1/4 (83)	3 (76)	2-3/4 (70)	2-1/2 (64)	2-1/8 (54)	1-7/8 (48)	1-3/4 (44)	1-1/2 (38)	1-3/8 (35)	1-1/4 (32)

TABLE 3: NEC / CEC minimum wire bending space from inside wall of the enclosure, North America applications only.

SIZE AWG (MM2)	16 (1.5)	14 (2.5)	12 (4)	10 (6)	8 (10)	6 (16)	4 (25)	2 (35)	1/0 (50)	2/0 (70)	3/0 (95)	4/0 (120)
IN. (MM)	1.5 (38)	1.5 (38)	1.5 (38)	1.5 (38)	1.5 (38)	2 (51)	3 (76)	3.5 (89)	5.5 (140)	6 (152)	6.5 (164)	7 (178)

TABLE 4: Punched hole diameters. For additional sizes not shown please contact the factory.

NPT	4"	3-1/2"	3"	2-1/2"	2"	1-1/2"	1-1/4"	1"	3/4"	1/2"
MAX. HOLE DIA. IN. (MM)	4.53 (115.06)	4.03 (102.36)	3.53 (89.66)	2.905 (73.79)	2.405 (61.08)	1.93 (49.2)	1.69 (42.93)	1.345 (34.16)	1.08 (27.4)	.87 (22.09)
METRIC	M100	M80	M75	M63	M50	M40	M32	M25	M20	M16
MAX. HOLE DIA. MM (IN.)	100.7 (3.94)	80.7 (3.15)	75.7 (2.95)	63.7 (2.48)	50.7 (1.97)	40.7 (1.58)	32.7 (1.26)	25.7 (0.98)	20.7 (0.79)	16.7 (0.63)

TABLE 5: Minimum distance of the center line to center line of the conduit / cable entries.

(NPT) [METRIC]	4 [M100]	3 1/2 [M80]	3 [M75]	2 1/2 [M63]	2 [M50]	1 1/2 [M40]	1 1/4 [M32]	1 [M25]	3/4 [M20]	1/2 [M16]
1/2 [M16]	3 5/8 [92mm]	3 3/8 [86mm]	3 1/8 [80mm]	2 3/4 [70mm]	2 1/2 [64mm]	2 1/4 [58mm]	2 1/8 [54mm]	1 7/8 [48mm]	1 3/4 [45mm]	1 5/8 [41mm]
3/4 [M20]	3 3/4 [96mm]	3 1/2 [89mm]	3 1/4 [83mm]	2 7/8 [74mm]	2 5/8 [68mm]	2 3/8 [60mm]	2 1/4 [58mm]	2 [51mm]	1 7/8 [48mm]	
1 [M25]	3 7/8 [99mm]	3 5/8 [92mm]	3 3/8 [86mm]	3 [77mm]	2 3/4 [70mm]	2 1/2 [64mm]	2 3/8 [60mm]	2 1/8 [54mm]		
1 1/4 [M32]	4 1/8 [105mm]	3 7/8 [99mm]	3 1/2 [89mm]	3 1/4 [83mm]	3 [77mm]	2 3/4 [70mm]	2 1/2 [64mm]			
1 1/2 [M40]	4 1/4 [108mm]	4 [102mm]	3 3/4 [96mm]	3 3/8 [86mm]	3 1/8 [80mm]	2 7/8 [73mm]				
2 [M50]	4 3/4 [121mm]	4 1/2 [115mm]	4 [102mm]	3 5/8 [92mm]	3 3/8 [86mm]					
2 1/2 [M63]	4 7/8 [124mm]	4 5/8 [118mm]	4 1/4 [108mm]	3 7/8 [99mm]						
3 [M75]	5 1/4 [134mm]	5 [127mm]	4 5/8 [118mm]							
3 1/2 [M80]	5 3/4 [147mm]	5 1/2 [140mm]								
4 [M100]	6 1/4 [159mm]									

All dimension in. (mm)



JUNCTION BOXES



Class II, Div. 1 & 2, Groups E, F, G
Class III
ENCL Type 3R, 4, 4X

UL LISTED - File E10514

SF Certified - File LR11716

FM APPROVED File 25132

See files for details or call Killark.

FEATURES-SPECIFICATIONS

Applications

- Hazardous locations due to the presence of combustible dusts or easily ignitable fibers or flyings
- Damp or wet locations (raintight)

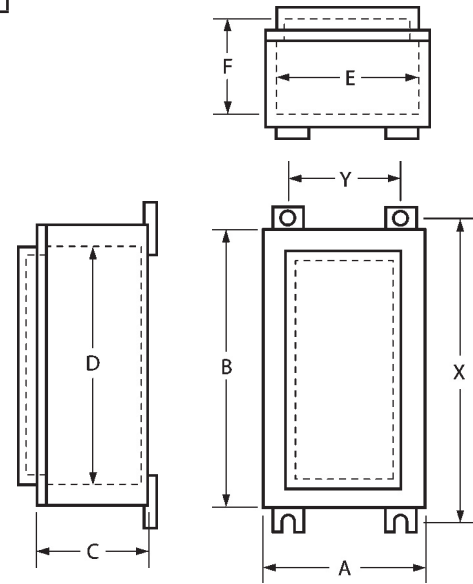
Features

- Copper-free aluminum (less than 4/10 of 1%)
- Surface mounting type box with raised cover
- Mounting lugs included as standard
- Cover screws are stainless steel
- Gaskets mechanically fastened to cover
- All DB boxes cast with wall thicknesses suitable to drill and tap conduit openings. Conduit openings may be factory or field installed. See chart for conduit size limitations. See page E55 for conduit opening data
- Enclosures are available blank or with factory modifications, options and accessories. See catalog pages E40-45 for additional details

MODIFICATIONS	
CATALOG NUMBER	DESCRIPTION
KIT-251	100 Amp ground lug
KIT-252	225 Amp ground lug

BOX WIDTH	"J" DIMENSION
6	1
8 THRU 20	1-3/8
24 AND LARGER	2

SUFFIX NUMBER	DESCRIPTION
SU2	Hinge installed
SU3	Drain and breather installed
SU8	Pan mounting studs





ENCLOSURES

JUNCTION BOXES



Class II, Div. 1 & 2, Groups E, F, G
Class III
ENCL Type 3R, 4, 4X

LISTED - File E10514

Certified - File LR11716

APPROVED File 25132
See files for details or call Killark.

FEATURES-SPECIFICATIONS

DB ENCLOSURES WITH MOUNTING LUGS															
CATALOG NUMBER	NOMINAL DIMENSIONS								MOUNTING DIMENSIONS		CATALOG NUMBER		MAX SIZE ^① CONDUIT OPENING		MAXIMUM NUMBER OF OPERATORS [†]
	OUTSIDE			INSIDE			COVER OPENING				OPTIONAL HINGE TYPE	OPTIONAL MOUNTING PAN ^{②③}	ENDS	BACK & SIDE	
	A	B	C	D	E	F	G	H	X	Y					
DB-664	6"	6"	4"	5-3/8"	5-3/8"	4-7/32"	4-1/4"	4-1/4"	7-1/4"	4-1/4"	HINGE-4	6307-6	2	2	1 row of 1 = 1
DB-884	8"	8"	4"	7-3/8"	7-3/8"	4-5/8"	5-7/16"	5-7/16"	9-1/4"	5-7/16"	HINGE-4	6247-8	2	2	2 rows of 2 = 4
DB-886	8"	8"	6"	7-3/8"	7-3/8"	6-5/8"	5-7/16"	5-7/16"	9-1/4"	5-7/16"	HINGE-4	6247-8	2	2	2 rows of 2 = 4
DB-8106	8"	10"	6"	9-3/8"	7-3/8"	6-5/8"	7-9/32"	5-5/16"	11-1/4"	5-5/16"	HINGE-4	6247-10	2	2	2 rows of 2 = 4
DB-6126	6"	12"	6"	11-3/8"	5-3/8"	6-7/32"	10-3/16"	4-5/16"	13-1/4"	4-5/16"	HINGE-4	6307-12	2	2	4 rows of 1 = 4
DB-8146	8"	14"	6"	13-3/8"	7-3/8"	6-5/8"	11-1/4"	5-5/16"	15-1/4"	5-5/16"	HINGE-4	6247-14	2	2	4 rows of 2 = 8
DB-8188	8"	18"	8"	17-3/8"	7-3/8"	8-5/8"	15-1/4"	5-5/16"	19-1/4"	5-5/16"	HINGE-4	6247-18	2	2	5 rows of 2 = 10
DB-10106	10"	10"	6"	9-3/8"	9-3/8"	6-1/2"	7-5/16"	7-5/16"	11-1/4"	7-5/16"	HINGE-4	6248-10	2	2	2 rows of 2 = 4
DB-10148	10"	14"	8"	13-3/8"	9-3/8"	8-1/2"	11-5/16"	7-5/16"	11-1/4"	7-5/16"	HINGE-4	6248-14	2	2	4 rows of 2 = 8
DB-12148	12"	14"	8"	13-3/8"	11-3/8"	8-7/16"	11-5/16"	9-5/16"	15-1/4"	9-5/16"	HINGE-4	6249-14	4	2	4 rows of 3 = 12
DB-12168	12"	16"	8"	15-3/8"	11-3/8"	8-9/16"	13-1/4"	9-1/4"	14-1/4"	9-1/4"	HINGE-4	6249-16	4	2	4 rows of 3 = 12
DB-12188	12"	18"	8"	17-3/8"	11-3/8"	8-5/8"	15-5/32"	9-5/32"	19-1/4"	9-5/32"	HINGE-4	6249-18	4	2	5 rows of 3 = 15
DB-12248	12"	24"	8"	23-3/8"	11-3/8"	8-1/6"	21-5/16"	9-5/16"	25-1/4"	9-5/16"	HINGE-4	6249-24	4	2	8 rows of 3 = 24
DB-16188	16"	18"	8"	17-3/8"	15-3/8"	8-9/16"	15-5/16"	13-5/16"	19-1/4"	13-5/16"	HINGE-4	6250-18	4	2	5 rows of 4 = 20
DB-16248	16"	24"	8"	23-3/8"	15-3/8"	8-9/16"	21-5/16"	13-5/16"	25-1/4"	13-5/16"	HINGE-4	6250-24	4	2	8 rows of 4 = 32
DB-16368	16"	36"	8"	35-3/8"	15-3/8"	8-9/16"	33-5/16"	13-5/16"	37-1/4"	13-5/16"	HINGE-4	6250-36	4	2	12 rows of 4 = 48
DB-20248	20"	24"	8"	23-3/8"	19-3/8"	8-9/16"	21-1/2"	17-1/2"	25-1/4"	17-1/2"	HINGE-4	6251-24	4	2	8 rows of 6 = 48
DB-203010	20"	30"	10"	29-3/8"	19-3/8"	10-5/8"	27-1/4"	17-1/4"	31-1/4"	17-1/4"	HINGE-4	6251-30	4	2	10 rows of 6 = 60
DB-243010	24"	30"	10"	29-1/8"	23-1/8"	10-7/16"	26"	20"	32"	20"	*HINGE-11L	6252-30	4	4	10 rows of 7 = 70
DB-243610	24"	36"	10"	35-3/8"	23-3/8"	10-7/16"	32"	20"	38"	20"	*HINGE-11L	6252-36	4	4	12 rows of 7 = 84

① These limits are necessary to assure 3-1/2 full threads to meet Class II requirements.

② Boxes are not factory machined for a mounting pan. Add suffix SU8 if box is to be supplied with pan mounting studs.

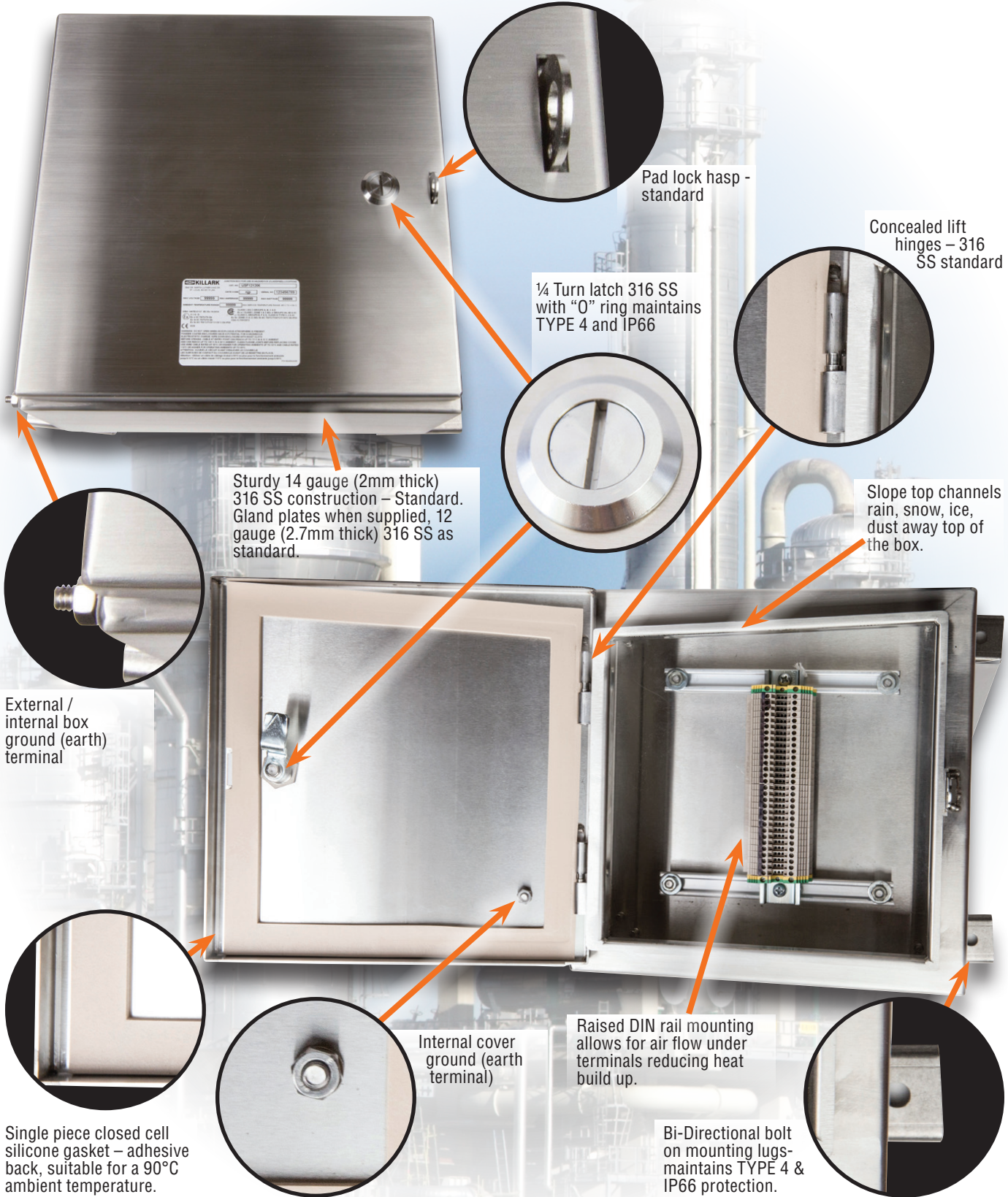
③ When pan is ordered without box, it is supplied with studs and hardware for field mounting. Machining of box for pan studs is required.

* 24" wide enclosures are furnished with hinged covers on left side as a standard feature.

† Maximum number of "G" series control operators permitted in cover, down + across = total.
Use short style "G" series operators.



TERMINAL BOXES FOR HARSH & HAZARDOUS ENVIRONMENTS



Pad lock hasp - standard

Concealed lift hinges - 316 SS standard

1/4 Turn latch 316 SS with "O" ring maintains TYPE 4 and IP66

Sturdy 14 gauge (2mm thick) 316 SS construction - Standard. Gland plates when supplied, 12 gauge (2.7mm thick) 316 SS as standard.

Slope top channels rain, snow, ice, dust away top of the box.

External / internal box ground (earth) terminal

Internal cover ground (earth terminal)

Raised DIN rail mounting allows for air flow under terminals reducing heat build up.

Bi-Directional bolt on mounting lugs - maintains TYPE 4 & IP66 protection.

Single piece closed cell silicone gasket - adhesive back, suitable for a 90°C ambient temperature.



ENCLOSURES

USF TERMINAL BOXES

TECHNE-TERM[®]

FEATURES-SPECIFICATIONS

Applications

Terminal enclosures for use in hazardous, corrosive, wet, hose down, dust, dirty, for both hot and cold industrial applications for terminating conductors by means of a terminal block.

- Pulp & Paper Mills
- Grain Facilities
- Breweries
- Marine, Docks, Ports
- Electrical Power Plants
- Coal Handling
- Refineries
- Off Shore Platforms
- Petrochemical Plants
- Pumping Stations
- Chemical Plants
- Textile manufacturing
- Wastewater Treatment
- Food Processing
- Used to link electrical wires. Provide access to conductors for maintenance and system expansions
- Primary circuits for distribution to field control devices.



USF Series

cCSAus / ATEX / IEC Ex Certified

IECEx SIR 14.0054

SIRA 14ATEX3157

CE 0518 Ex II 2 G D

Ex e IIC Gb, Ex i IIC Gb

Ex tb IIIC Db IP66

TA= -50°C to +45°C /T6/T80°C

TA= -50°C to +55°C /T5/T100°C

TA= -50°C to +90°C /T4/T130°C

Class I, Div. 2, Groups A, B, C & D

Ex e/ Class I, Zones 1 & 2, AEX e

Groups IIA, IIB & IIC

Class II, Groups E, F & G. Class III

Type 3, 4 & 4X

Ex tb / Zone 21 & 22 AEx tb IIC

T80°C/ T100°C/T130°C Db

IP66

CSA 15.70013872

IECEx 15.0155X INMETRO



Material

- 316 stainless steel as standard.
- Option material 304 Stainless steel, carbon steel or aluminum.
- All external hardware 316 stainless steel.
- Gasket One piece high temperature closed cell silicone.

USF Terminal Box Features – 38 Sizes

- Offered with ABB or Weidmuller increase safety terminal blocks in choices of screw terminal or cage (spring) clamp styles DIN rail mounted. Intrinsically safe terminals available also.
- External slope top flange directs water, melting ice & snow and dust build up away from the opening side of the door.
- Continuous robot welded seams for a hose down tight seal.
- Concealed hinges with removable hinge pins. Standard on left side.
- Doors are interchangeable and easily removable.
- Ground/earthing studs in both cover and through wall of the box.
- Quarter turn 316 stainless steel latch
- One piece high temperature closed cell silicone gasket. With superior recovery and re-sealing properties.
- Sturdy 14 gauge box construction helps prevent bending or permanent deflection of the walls when field installing openings.
- Bi-directional removal mounting lugs for the widest flexibility during installations.
- Openings for glands or conduit factory or field installed – option for gland plates.

USF	12	12	06	*	W	S	1	6	GP1200	*
1	2	3	4	5	6	7	8	9		

1. USF SERIES

2. ENCLOSURE SIZE L x W x D

3. MATERIAL:

Blank = 316 Stainless Steel

S = 304 Stainless Steel

C = Carbon Steel Painted

4. TERMINAL MANUFACTURER

W = WEIDMULLER

A = ABB

5. TERMINAL TYPE

S = Screw Clamp

C = Cage Clamp

6. NO. ROWS OF TERMINAL

1 = 1 Row

2 = 2 Rows

3 = 3 Rows

4 = 4 Rows

Max of 9 Rows

7. TERMINALBLOCK SIZE

1 = 1.5mm² (AWG #14)

2 = 2.5mm² (AWG #14)

4 = 4mm² (AWG #12)

6 = 6mm² (AWG #10)

10 = 10mm² (AWG #8)

16 = 16mm² (AWG #6)

35 = 35mm² (AWG #2)

Larger sizes contact the factory

Specify ground/earth blocks size and qty separately. Must be included in total qty.

See pages E18 & E19 for maximum qty/size of blocks per enclosure

8. GLAND PLATE / LOCATIONS

0 = None

1 = Bottom

2 = LHS

3 = Top

4 = RHS

9. OPTIONS (SEE CATALOG)



USF TERMINAL BOXES

TECHNE-TERM[®]

CATALOG NUMBER	HEIGHT IN. (MM)	WIDTH	DEPTH	"E"	"F"	"G"	"H"	"A" GLAND PLATE	"B" GLAND PLATE	"C" GLAND PLATE	WEIGHT LBS (KG)
USF121206	12 (305)	12 (305)	6 (153)	10.69 (272)	10.69 (272)	13.63 (346)	13.63 (346)	4.06 (103)	9.63 (245)	9.63 (245)	14 (6.3)
USF161206	16 (407)	12 (305)	6 (153)	10.69 (272)	14.69 (373)	13.63 (346)	17.63 (448)	4.06 (103)	13.38 (340)	9.63 (245)	20 (9.1)
USF161208	16 (407)	12 (305)	8 (203)	10.69 (272)	14.69 (373)	13.63 (346)	17.63 (448)	6.06 (154)	13.38 (340)	9.63 (245)	22 (10)
USF161210	16 (407)	12 (305)	10 (254)	10.69 (272)	14.69 (373)	13.63 (346)	17.63 (448)	8.06 (205)	13.38 (340)	9.63 (245)	24 (10.9)
USF161606	16 (407)	16 (407)	6 (153)	14.69 (373)	14.69 (373)	17.63 (448)	17.63 (448)	4.06 (103)	13.38 (340)	13.38 (340)	26 (11.8)
USF161608	16 (407)	16 (407)	8 (203)	14.69 (373)	14.69 (373)	17.63 (448)	17.63 (448)	6.06 (154)	13.38 (340)	13.38 (340)	27 (12.2)
USF161610	16 (407)	16 (407)	10 (254)	14.69 (373)	14.69 (373)	17.63 (448)	17.63 (448)	8.06 (205)	13.38 (340)	13.38 (340)	29 (13.2)
USF201606	20 (508)	16 (407)	6 (153)	18.69 (475)	14.69 (373)	21.63 (549)	17.63 (448)	4.06 (103)	17.38 (441)	13.38 (340)	29 (13.2)
USF201608	20 (508)	16 (407)	8 (203)	14.69 (373)	18.69 (475)	17.63 (448)	21.63 (549)	6.06 (154)	17.38 (441)	13.38 (340)	31 (14)
USF201610	20 (508)	16 (407)	10 (254)	14.69 (373)	18.69 (475)	17.63 (448)	21.63 (549)	8.06 (205)	17.38 (441)	13.38 (340)	32 (14.5)
USF202006	20 (508)	20 (508)	6 (153)	14.69 (373)	18.69 (475)	17.63 (448)	21.63 (549)	4.06 (103)	17.38 (441)	17.38 (441)	35 (15.9)
USF202008	20 (508)	20 (508)	8 (203)	18.69 (475)	18.69 (475)	21.63 (549)	21.63 (549)	6.06 (154)	17.38 (441)	17.38 (441)	37 (16.8)
USF202010	20 (508)	20 (508)	10 (254)	18.69 (475)	18.69 (475)	21.63 (549)	21.63 (549)	8.06 (205)	17.38 (441)	17.38 (441)	39 (17.7)
USF202012	20 (508)	20 (508)	12 (305)	18.69 (475)	18.69 (475)	21.63 (549)	21.63 (549)	10.06 (255)	17.38 (441)	17.38 (441)	44 (20)
USF241606	24 (610)	16 (407)	6 (153)	14.69 (373)	22.69 (576)	17.63 (448)	25.63 (651)	4.06 (103)	21.38 (543)	13.38 (340)	35 (15.9)
USF241608	24 (610)	16 (407)	8 (203)	18.69 (475)	18.69 (475)	21.63 (549)	21.63 (549)	6.06 (154)	21.38 (543)	13.38 (340)	36 (16.3)
USF241610	24 (610)	16 (407)	10 (254)	14.69 (373)	22.69 (576)	17.63 (448)	25.63 (651)	8.06 (205)	21.38 (543)	13.38 (340)	38 (17.2)
USF242006	24 (610)	20 (508)	6 (153)	14.69 (373)	22.69 (576)	17.63 (448)	25.63 (651)	4.06 (103)	21.38 (543)	17.38 (441)	42 (19)
USF242008	24 (610)	20 (508)	8 (203)	18.69 (475)	22.69 (576)	21.63 (549)	25.63 (651)	6.06 (154)	21.38 (543)	17.38 (441)	43 (19.5)
USF242010	24 (610)	20 (508)	10 (254)	18.69 (475)	22.69 (576)	21.63 (549)	25.63 (651)	8.06 (205)	21.38 (543)	17.38 (441)	44 (20)
USF242012	24 (610)	20 (508)	12 (305)	18.69 (475)	22.69 (576)	21.63 (549)	25.63 (651)	10.06 (255)	21.38 (543)	17.38 (441)	46 (20.9)
USF242406	24 (610)	24 (610)	6 (153)	18.69 (475)	22.69 (576)	21.63 (549)	25.63 (651)	4.06 (103)	21.38 (543)	21.38 (543)	49 (22.2)
USF242408	24 (610)	24 (610)	8 (203)	22.69 (576)	22.69 (576)	25.63 (651)	25.63 (651)	6.06 (154)	21.38 (543)	21.38 (543)	53 (24)
USF242410	24 (610)	24 (610)	10 (254)	22.69 (576)	22.69 (576)	25.63 (651)	25.63 (651)	8.06 (205)	21.38 (543)	21.38 (543)	58 (26.3)
USF242412	24 (610)	24 (610)	12 (305)	22.69 (576)	22.69 (576)	25.63 (651)	25.63 (651)	10.06 (255)	21.38 (543)	21.38 (543)	62 (28.1)
USF242416	24 (610)	24 (610)	16 (407)	22.69 (576)	22.69 (576)	25.63 (651)	25.63 (651)	14.06 (357)	21.38 (543)	21.38 (543)	71 (32.2)
USF242420	24 (610)	24 (610)	20 (508)	22.69 (576)	22.69 (576)	25.63 (651)	25.63 (651)	18.06 (458)	21.38 (543)	21.38 (543)	78 (35.4)
USF302008	30 (762)	20 (508)	8 (203)	22.69 (576)	22.69 (576)	25.63 (651)	25.63 (651)	6.06 (154)	26.00 (660)	17.38 (441)	59 (26.8)
USF302010	30 (762)	20 (508)	10 (254)	18.69 (475)	28.69 (729)	21.63 (549)	31.63 (803)	8.06 (205)	26.00 (660)	17.38 (441)	61 (27.7)
USF302408	30 (762)	24 (610)	8 (203)	18.69 (475)	28.69 (729)	21.63 (549)	31.63 (803)	6.06 (154)	26.00 (660)	21.38 (543)	56 (25.4)
USF302410	30 (762)	24 (610)	10 (254)	22.69 (576)	28.69 (729)	25.63 (651)	31.63 (803)	8.06 (205)	26.00 (660)	21.38 (543)	63 (28.6)
USF302412	30 (762)	24 (610)	12 (305)	22.69 (576)	28.69 (729)	25.63 (651)	31.63 (803)	10.06 (255)	26.00 (660)	21.38 (543)	64 (29)
USF302420	30 (762)	24 (610)	20 (508)	22.69 (576)	28.69 (729)	25.63 (651)	31.63 (803)	18.06 (458)	26.00 (660)	21.38 (543)	99 (45)
USF303008	30 (762)	30 (762)	8 (203)	22.69 (576)	28.69 (729)	25.63 (651)	31.63 (803)	6.06 (154)	26.00 (660)	26.00 (660)	68 (30.8)
USF303010	30 (762)	30 (762)	10 (254)	28.69 (729)	28.69 (729)	31.63 (803)	31.63 (803)	8.06 (205)	26.00 (660)	26.00 (660)	72 (32.7)
USF303012	30 (762)	30 (762)	12 (305)	28.69 (729)	28.69 (729)	31.63 (803)	31.63 (803)	10.06 (255)	26.00 (660)	26.00 (660)	89 (40.4)
USF362408	36 (915)	24 (610)	8 (203)	34.69 (881)	28.69 (729)	37.63 (956)	31.63 (803)	6.06 (154)	33.00 (838)	21.38 (543)	66 (30)
USF362410	36 (915)	24 (610)	10 (254)	9.79 (249)	35.20 (894)	8.15 (207)	27.63 (702)	8.06 (205)	33.00 (838)	21.38 (543)	70 (31.8)

All dimension in. (mm)



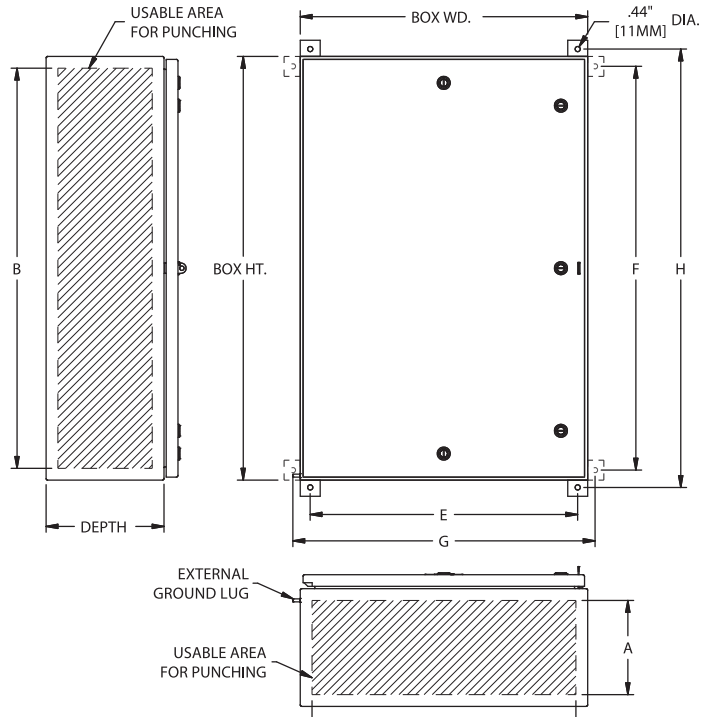
USF TERMINAL BOXES

TECHNE-TERM

CATALOG NUMBER	"A" BLANK WALL AREA	"B" BLANK WALL AREA	"C" BLANK WALL AREA	(W) MAX. POWER
USF121206	5.74 (146)	10.93 (277)	10.93 (277)	15.0
USF161206	5.74 (146)	14.93 (379)	10.93 (277)	17.0
USF161208	7.74 (196)	14.93 (379)	10.93 (277)	20.6
USF161210	9.74 (247)	14.93 (379)	10.93 (277)	23.5
USF161606	5.74 (146)	14.93 (379)	14.93 (379)	19.0
USF161608	7.74 (196)	14.93 (379)	14.93 (379)	20.0
USF161610	9.74 (247)	14.93 (379)	14.93 (379)	25.0
USF201606	5.74 (146)	18.93 (480)	14.93 (379)	21.0
USF201608	7.74 (196)	18.93 (480)	14.93 (379)	23.0
USF201610	9.74 (247)	18.93 (480)	14.93 (379)	26.0
USF202006	5.74 (146)	18.93 (480)	18.93 (480)	24.3
USF202008	7.74 (196)	18.93 (480)	18.93 (480)	26.0
USF202010	9.74 (247)	18.93 (480)	18.93 (480)	30.0
USF202012	11.74 (298)	18.93 (480)	18.93 (480)	36.0
USF241606	5.74 (146)	22.93 (582)	14.93 (379)	35.0
USF241608	7.74 (196)	22.93 (582)	14.93 (379)	36.0
USF241610	9.74 (247)	22.93 (582)	14.93 (379)	31.0
USF242006	5.74 (146)	22.93 (582)	18.93 (480)	24.5
USF242008	7.74 (196)	22.93 (582)	18.93 (480)	31.5
USF242010	9.74 (247)	22.93 (582)	18.93 (480)	33.6
USF242012	11.74 (298)	22.93 (582)	18.93 (480)	36.0
USF242406	5.74 (146)	22.93 (582)	22.93 (582)	25.8
USF242408	7.74 (196)	22.93 (582)	22.93 (582)	34.0
USF242410	9.74 (247)	22.93 (582)	22.93 (582)	34.0
USF242412	11.74 (298)	22.93 (582)	22.93 (582)	38.0
USF242416	15.74 (400)	22.93 (582)	22.93 (582)	42.0
USF242420	19.74 (501)	22.93 (582)	22.93 (582)	57.3
USF302008	7.74 (196)	28.93 (735)	18.93 (480)	36.5
USF302010	9.74 (247)	28.93 (735)	18.93 (480)	36.0
USF302408	7.74 (196)	28.93 (735)	22.93 (582)	39.0
USF302410	9.74 (247)	28.93 (735)	22.93 (582)	38.0
USF302412	11.74 (298)	28.93 (735)	22.93 (582)	40.0
USF302420	19.74 (501)	28.93 (735)	22.93 (582)	57.3
USF303008	7.74 (196)	28.93 (735)	28.93 (735)	43.0
USF303010	9.74 (247)	28.93 (735)	28.93 (735)	40.0
USF303012	11.74 (298)	28.93 (735)	28.93 (735)	46.0
USF362408	7.74 (196)	34.93 (887)	22.93 (582)	44.0
USF362410	9.74 (247)	34.93 (887)	22.93 (582)	40.0

All dimension in. (mm)

USF MAXIMUM CONDUIT / GLAND OPENINGS					
W/O GLAND PLATE			W/ GLAND PLATE		
BOX DEPTH	MAX NPT	MAX METRIC	BOX DEPTH	MAX NPT	MAX METRIC
6	3-1/2"	M100	6	2-1/2"	M75
8	4"	M100	8	4"	M100
10	4"	M100	10	4"	M100
12	4"	M100	12	4"	M100
16	4"	M100	16	4"	M100
20	4"	M100	20	4"	M100



Standard terminal offering

- ABB ZS Screw Clamp
- ABB ZK Cage (Spring) Clamp
- Weidmuller WD Screw Clamp
- Weidmuller ZD Cage (Spring) Clamp

Additional ABB & Weidmuller terminal blocks available. Contact the factory for more information.

Terminals are mounted on TS-35 DIN rail. The rails are mounted to raised collared studs or unistrut rails which adds additional air flow and wire room.

Pages E6 & E7 for maximum number of terminals and rows per enclosure.

Specify ground / earth blocks size and qty separately. Must be included in total qty.

The USF terminal boxes are suitable for use Wago, Phoenix and Klemsan Elektrik terminals.

Options

- Panel ID tag 316 stainless steel
- Tamperproof latches
- Key latches
- Copper ground / earth bars

See enclosure modification page for conduit / gland holes sizes and spacing.



WEIDMULLER TERMINALS

Weidmuller WDU Series Screw Terminal

Weidmuller ZDU Series Cage Clamp Terminals

Weidmuller WDUN Series Screw Clamp Terminals

Table with 7 columns: WDU 2.5, 15 AMPS 2.5MM² 550VAC (14 AWG), rows for USF1212** through USF3624**

Table with 7 columns: ZDU 2.5, 21 AMPS 2.5MM² 550VAC (14 AWG), rows for USF1212** through USF3624**

Table with 9 columns: WDU 2.5N, 15 AMPS 2.5MM² 440VAC (14 AWG), rows for USF1212** through USF3624**

Table with 7 columns: WDU 4, 28 AMPS 4MM² 690VAC (12 AWG 600VAC), rows for USF1212** through USF3624**

Table with 7 columns: ZDU 4, 28 AMPS 4MM² 550VAC (12 AWG), rows for USF1212** through USF3624**

Table with 9 columns: WDU 4N, 27 AMPS 4MM² 440VAC (12 AWG), rows for USF1212** through USF3624**

Table with 7 columns: WDU 6, 36 AMPS 6MM² 550VAC (10 AWG), rows for USF1212** through USF3624**

Table with 7 columns: ZDU 6, 36 AMPS 6MM² 550VAC (10 AWG), rows for USF1212** through USF3624**

Table with 9 columns: WDK 2.5N, 21 AMPS 2.5MM² 550VAC (14 AWG) DOUBLE POLE FEED THROUGH, rows for USF1212** through USF3624**

Table with 7 columns: WDU 10, 50 AMPS 10MM² 550VAC (8 AWG), rows for USF1212** through USF3624**

Table with 7 columns: ZDU 10, 50 AMPS 10MM² 550VAC (8 AWG), rows for USF1212** through USF3624**

Table with 9 columns: WDK 4N, 28 AMPS 4MM² 550VAC (12 AWG) DOUBLE POLE FEED THROUGH, rows for USF1212** through USF3624**

Table with 7 columns: WDU 16, 66 AMPS 16MM² 690VAC (6 AWG 600VAC), rows for USF1212** through USF3624**

Table with 7 columns: ZDU 16, 66 AMPS 16MM² 690VAC (6 AWG 600VAC), rows for USF1212** through USF3624**

Table with 9 columns: WDK 2.5Nv, 21 AMPS 2.5MM² 550VAC (14 AWG) FOUR POLES FEED THROUGH, rows for USF1212** through USF3624**

Table with 7 columns: WDU 35, 109 AMPS 35MM² 690VAC (2 AWG 600VAC), rows for USF1212** through USF3624**

Table with 7 columns: ZDU 35, 109 AMPS 35MM² 690VAC (2 AWG 600VAC), rows for USF1212** through USF3624**

Table with 9 columns: WDK 4Nv, 28 AMPS 4MM² 550VAC (12 AWG) FOUR POLES FEED THROUGH, rows for USF1212** through USF3624**



SJIC SERIES

KILLARK

TERMINAL BOXES FOR HARSH & HAZARDOUS ENVIRONMENTS



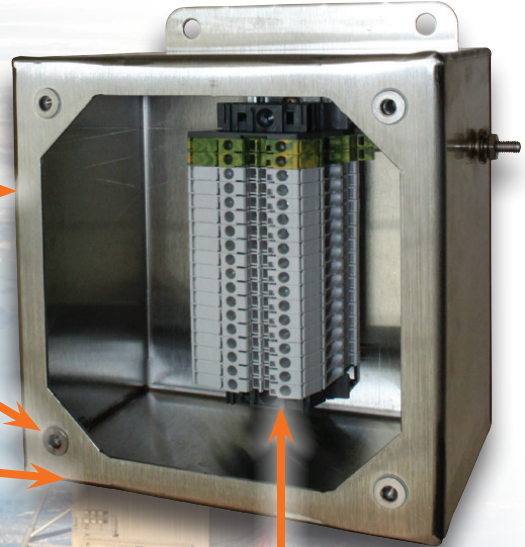
Certification and electrical rating labels internally and externally

Screw cover style, with or without continuous hinge

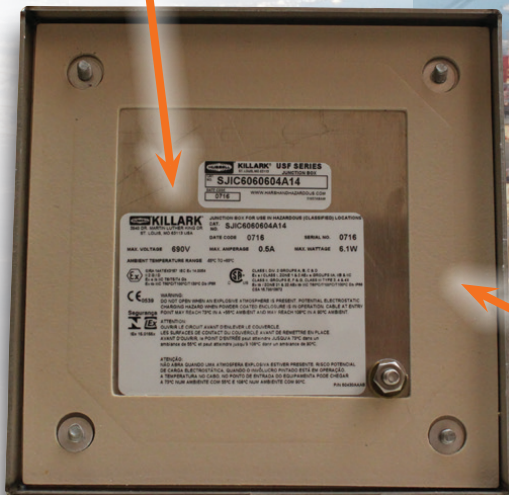
3/16" (5mm) wide flat flange for maximum gasket surface contact

Sealed press fit threaded inserts for Type 4 & IP66 applications

Continuous robot welded seams for hose down tight seal

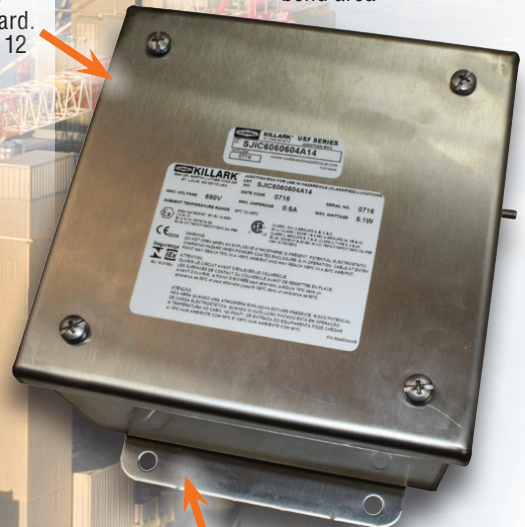


Raised DIN rail mounting allows for air flow and additional wire bend area



Sturdy 14 gauge (2mm thick) 316 SS construction – Standard. Optional gland plates 316 SS 12 gauge (2.7mm thick)

Single piece closed cell silicone gasket – adhesive back, suitable for a 90°C ambient temperature

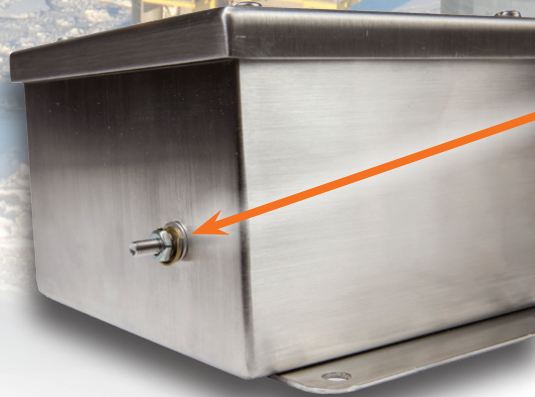


Welded on mounting lugs, 14 Gauge (2mm thick) top and bottom, 316 stainless steel

Internal cover ground (earth) terminal



Captive cover screws



External / Internal box ground (earth) terminals



ENCLOSURES



SJIC / SJICH SERIES

SJIC & SJICH TERMINAL BOXES • SCREW COVER & HINGED SCREW COVER

TECHNE-TERM[®]

FEATURES-SPECIFICATIONS

Applications

Terminal enclosures for use in hazardous, corrosive, wet, hose down, dust, dirty, for both hot and cold industrial applications for terminating conductors by means of a terminal block.

- Pulp & Paper Mills
- Grain Facilities
- Breweries
- Marine, Docks, Ports
- Electrical Power Plants
- Coal Handling
- Refineries
- Off Shore Platforms
- Petrochemical Plants
- Pumping Stations
- Chemical Plants
- Textile manufacturing
- Wastewater Treatment
- Food Processing
- Used to link electrical wires. Provide access to conductors for maintenance and system expansions
- Primary circuits for distribution to field control devices



SJIC Series

Material

- 316 stainless steel as standard.
- Option material 304 Stainless steel, carbon steel or aluminum.
- All external hardware 316 stainless steel.
- Gasket One piece high temperature closed cell silicone.

SJIC Enclosures Features – 15 Sizes SJICH Enclosures Features – 11 Sizes

- Offered with ABB or Weidmuller increase safety terminal blocks in choices of screw terminal or cage (spring) clamp styles DIN rail mounted. Intrinsically safe terminals available also.
- Screw covers 316 stainless steel
- Continuous robot welded seams for a hose down tight seal.
- SJIC doors are interchangeable and easily removable.
- SJICH have continuous one piece hinge construction. Standard on left side.
- Ground/earthing studs in both cover and through wall of the box.
- One piece high temperature closed cell silicone gasket. With superior recovery and re-sealing properties.
- Sturdy 14 gauge box construction helps prevent bending or permanent deflection of the walls when field installing openings.
- Welded one piece mounting flanges top and bottom for strength.
- Openings for glands or conduit factory or field installed – option for gland plates.

cCSAus / ATEX / IEC Ex Certified

IECEX SIR 14.0054

SIRA 14ATEX3157

CE 0518



Ex e IIC Gb, Ex i IIC Gb

Ex tb IIIC Db IP66

TA= -50°C to +45°C /T6/T80°C

TA= -50°C to +55°C /T5/T100°C

TA= -50°C to +90°C /T4/T130°C

Class I, Div. 2, Groups A, B, C & D

Ex e/ Class I, Zones 1 & 2, AEX e

Groups IIA, IIB & IIC

Class II, Groups E, F & G. Class III

Type 3, 4 & 4X

Ex tb / Zone 21 & 22 AEx tb IIC

T80°C/ T100°C/T130°C Db

IP66

CSA 15.70013872

IEEx 15.0155X INMETRO



Seguranca
N Ex



SJIC	*	12 12 06	W	S	1	6	GP1200	*
1	2	3	4	5	6	7	8	9

1. SERIES

SJIC = Screw Cover

SJICH = Screw / Hinged Cover

2. MATERIAL:

6 = 316 Stainless Steel

4 = 304 Stainless Steel

Blank = Carbon Steel Painted

3. ENCLOSURE SIZE L x W x D

4. TERMINAL MANUFACTURER

W = WEIDMULLER

A = ABB

5. TERMINAL TYPE

S = Screw Clamp

C = Cage Clamp

6. NO. ROWS OF TERMINAL

1 = 1 Row

2 = 2 Rows

3 = 3 Rows

4 = 4 Rows

7. TERMINALBLOCK SIZE

1 = 1.5mm² (AWG #14)

2 = 2.5mm² (AWG #14)

4 = 4mm² (AWG #12)

6 = 6mm² (AWG #10)

10 = 10mm² (AWG #8)

16 = 16mm² (AWG #6)

35 = 35mm² (AWG #2)

Larger sizes contact the factory

Specify ground /earth blocks size and qty separately. Must be included in total qty. See pages E11 & E12 for maximum qty/size of blocks per enclosure

8. GLAND PLATE / LOCATIONS

0 = None

1 = Bottom

2 = LHS

3 = Top

4 = RHS

See enclosure charts for suitable gland plates

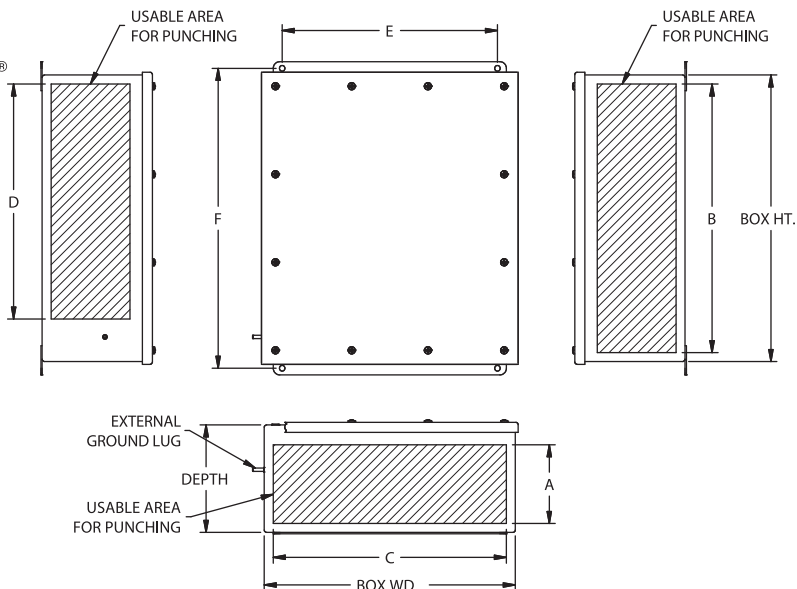
9. OPTIONS (SEE CATALOG)



SJIC TERMINAL BOXES

TECHNE-TERM[®]

SUFFIX NUMBER	DESCRIPTION
KIT-251	100 amp ground lug
KIT-252	225 amp ground lug
SU3-KDE	Class I Div. 2 Grps A, B, C & D, Type 4X, Ex e IIC Zone 1 IP 66 Drain & breather installed.
SU10-KDE	Class I Div. 2 Grps A, B, C & D, Type 4X, Ex e IIC Zone 1 IP 66 Drain only installed.
DC	Document Wallet (enclosures 10 x 10 and larger only)
SU9	Special paint finish
SU14	Fungus proofing of enclosures



See enclosure modification page for conduit / gland hole sizes and spacing.

CATALOG NUMBER	HEIGHT IN. (MM)	WIDTH	DEPTH	"E"	"F"	"A" BLANK WALL	"B" BLANK WALL	"C" BLANK WALL	"D" BLANK WALL
SJIC6040404	4 (102)	4 (102)	4 (102)	2.00 (51)	4.75 (121)	2.47(63)	3.13 (79)	3.13 (79)	1.19 (30)
SJIC6060404	6 (152)	4 (102)	4 (102)	2.00 (51)	6.75 (171)	2.47(63)	5.13 (130)	3.13 (79)	3.19 (81)
SJIC6060604	6 (152)	6 (152)	4 (102)	4.00 (102)	6.75 (171)	2.47(63)	5.13 (130)	5.13 (130)	3.19 (81)
SJIC6060606	6 (152)	6 (152)	6 (152)	4.00 (102)	6.75 (171)	4.47 (114)	5.13 (130)	5.13 (130)	3.19 (81)
SJIC6080606*	8 (203)	6 (152)	6 (152)	4.00 (102)	8.75 (222)	4.47 (114)	7.13 (181)	7.13 (181)	5.19 (132)
SJIC6080804	8 (203)	8 (203)	4 (102)	6.00 (152)	8.75 (222)	2.47(63)	7.13 (181)	7.13 (181)	5.19 (132)
SJIC6080806*	8 (203)	8 (203)	6 (152)	6.00 (152)	8.75 (222)	4.47 (114)	7.13 (181)	7.13 (181)	5.19 (132)
SJIC6100804	10 (254)	8 (203)	4 (102)	6.00 (152)	10.75 (273)	2.47(63)	9.13 (232)	7.13 (181)	7.19 (183)
SJIC6100806*	10 (254)	8 (203)	6 (152)	6.00 (152)	10.75 (273)	4.47 (114)	9.13 (232)	7.13 (181)	7.19 (183)
SJIC6101006*	10 (254)	10 (254)	6 (152)	8.00 (203)	10.75 (273)	4.47 (114)	9.13 (232)	9.13 (232)	7.19 (183)
SJIC6121005*	12 (305)	10 (254)	5 (127)	8.00 (203)	12.75 (324)	3.47 (88)	11.13 (283)	9.13 (232)	9.19 (233)
SJIC6121006*	12 (305)	10 (254)	6 (152)	8.00 (203)	12.75 (324)	4.47 (114)	11.13 (283)	9.13 (232)	9.19 (233)
SJIC6121206*	12 (305)	12 (305)	6 (152)	10.00 (254)	12.75 (324)	4.47 (114)	11.13 (283)	11.13 (283)	9.19 (233)
SJIC6141206*	14 (356)	12 (305)	6 (152)	10.00 (254)	14.75 (375)	4.47 (114)	13.13 (334)	11.13 (283)	11.19 (284)
SJIC6161406*	16 (406)	14 (356)	6 (152)	12 (305)	16.75 (425)	4.47 (114)	15.13 (384)	13.13 (334)	13.19 (335)

All dimension in. (mm)

*Enclosure can be supplied with gland plates

CATALOG NUMBER	(W) MAX. POWER	WEIGHT LBS / (KG)
SJIC6040404	4.1	2.83 (1.3)
SJIC6060404	5.2	3.6 (1.6)
SJIC6060604	6.1	4.9 (2.2)
SJIC6060606	8.4	5.9 (2.7)
SJIC(H)6080606	10.5	7.5 (3.4)
SJIC(H)6080804	8.4	7.9 (3.6)
SJIC(H)6080806	11.4	8.33 (3.8)
SJIC(H)6100804	8.4	9.5 (4.4)
SJIC(H)6100806	12.2	10 (4.5)
SJIC(H)6101006	13	11 (5)
SJIC(H)6121005	8.4	12 (5.4)
SJIC(H)6121006	14	13 (5.9)
SJIC(H)6121206	15	15 (6.8)
SJIC(H)6141206	16	16 (7.3)
SJIC(H)6161406	18	20 (9)

SJIC & SJICH TERMINAL BOXES

Instock Terminal Boxes

- Populated with ABB ZS4, 32 Amps 4mm² 690VAC (12 AWG 600VAC) terminal blocks.
- Supplied with two ZS 4-PE ground / earth blocks per rail.
- Blank enclosures for field modifications for gland or conduit openings.
- Material – 316 stainless steel

CATALOG NUMBER	TOTAL QTY OF TERMINALS	NO. OF RAILS
SJIC6040404A14	6	1
SJIC6060604A14	16	1
SJIC6100806A14	30	1
SJIC6101006A24	60	2
SJIC6121206A24	80	2

ENCLOSURES

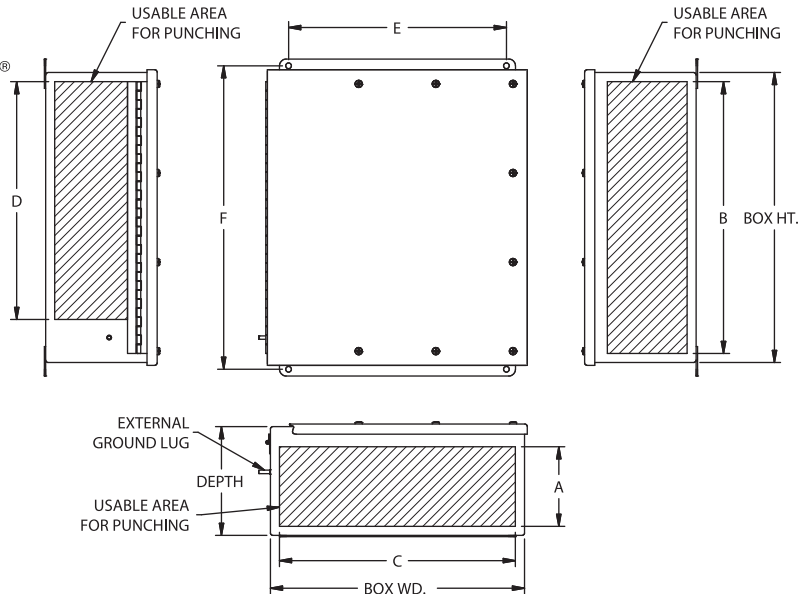


SJICH SERIES

SJICH TERMINAL BOXES

TECHNE-TERM[®]

SUFFIX NUMBER	DESCRIPTION
KIT-251	100 amp ground lug
KIT-252	225 amp ground lug
SU3-KDE	Class I Div. 2 Grps A, B, C & D, Type 4X. Ex e IIC Zone 1 IP 66 Drain & breather installed.
SU10-KDE	Class I Div. 2 Grps A, B, C & D, Type 4X. Ex e IIC Zone 1 IP 66 Drain only installed.
DC	Document Wallet (enclosures 10 x 10 and larger only)
SU9	Special paint finish
SU14	Fungus proofing of enclosures



See enclosure modification page for conduit / gland hole sizes and spacing.

CATALOG NUMBER	HEIGHT IN. (MM)	WIDTH	DEPTH	"E"	"F"	"A" BLANK WALL	"B" BLANK WALL	"C" BLANK WALL	"D" BLANK WALL	"E" BLANK WALL
SJICH6080606*	8 (203)	6 (152)	6 (152)	4.00 (102)	8.75 (222)	4.47 (114)	7.13 (181)	7.13 (181)	5.19 (132)	3.81 (97)
SJICH6080804	8 (203)	8 (203)	4 (102)	6.00 (152)	8.75 (222)	2.47(63)	7.13 (181)	7.13 (181)	5.19 (132)	1.81 (46)
SJICH6080806*	8 (203)	8 (203)	6 (152)	6.00 (152)	8.75 (222)	4.47 (114)	7.13 (181)	7.13 (181)	5.19 (132)	3.81 (97)
SJICH6100804	10 (254)	8 (203)	4 (102)	6.00 (152)	10.75 (273)	2.47(63)	9.13 (232)	7.13 (181)	7.19 (183)	1.81 (46)
SJICH6100806*	10 (254)	8 (203)	6 (152)	6.00 (152)	10.75 (273)	4.47 (114)	9.13 (232)	7.13 (181)	7.19 (183)	3.81 (97)
SJICH6101006*	10 (254)	10 (254)	6 (152)	8.00 (203)	10.75 (273)	4.47 (114)	9.13 (232)	9.13 (232)	7.19 (183)	3.81 (97)
SJICH6121005*	12 (305)	10 (254)	5 (127)	8.00 (203)	12.75 (324)	3.47 (88)	11.13 (283)	9.13 (232)	9.19 (233)	2.81 (71)
SJICH6121006*	12 (305)	10 (254)	6 (152)	8.00 (203)	12.75 (324)	4.47 (114)	11.13 (283)	9.13 (232)	9.19 (233)	3.81 (97)
SJICH6121206*	12 (305)	12 (305)	6 (152)	10.00 (254)	12.75 (324)	4.47 (114)	11.13 (283)	11.13 (283)	9.19 (233)	3.81 (97)
SJICH6141206*	14 (356)	12 (305)	6 (152)	10.00 (254)	14.75 (375)	4.47 (114)	13.13 (334)	11.13 (283)	11.19 (284)	3.81 (97)
SJICH6161406*	16 (406)	14 (356)	6 (152)	12 (305)	16.75 (425)	4.47 (114)	15.13 (384)	13.13 (334)	13.19 (335)	3.81 (97)

*Enclosure can be supplied with gland plates
All dimension in. (mm)

Standard terminal offering

- ABB ZS Screw Clamp
- ABB ZK Cage (Spring) Clamp
- Weidmuller WD Screw Clamp
- Weidmuller ZD Cage (Spring) Clamp

Terminals are mounted on TS-35 DIN rail. The rails are mounted to raised collared studs or unistrut rails which adds additional air flow and wire room.

Additional ABB & Weidmuller terminal blocks available. Contact the factory for more information.

Pages E24 & E25 for maximum number of terminals and rows per enclosure.

Specify ground / earth blocks size and qty separately. Must be included in total qty.

The SJIC(H) terminal boxes are suitable for use Wago, Phoenix and Klemsan Elektrik terminals.

Options

- Panel ID tag 316 stainless steel
- Copper ground / earth bars

SJIC / SJICH MAXIMUM CONDUIT / GLAND OPENINGS					
W/O GLAND PLATE			W/ GLAND PLATE		
BOX DEPTH	MAX NPT	MAX METRIC	BOX DEPTH	MAX NPT	MAX METRIC
4	1"	M32	4	1/2"	M20
5	1-1/2"	M50	5	1-1/4"	M40
6	3"	M80	6	2"	M63



USF / SJIC / SJICH ENCLOSURES



TABLE 1: Minimum distance from edge of box to the center of the conduit / cable entry.

NPT (METRIC)	4"	3-1/2"	3" (M75)	2-1/2" (M63)	2" (M50)	1-1/2" (M40)	1-1/4" (M32)	1" (M25)	3/4" (M20)	1/2" (M16)
IN. (MM)	2-3/4 (70)	2-1/2 (64)	2 (51)	2 (51)	1-5/8 (41)	1-3/8 (35)	1-1/4 (32)	1 (25)	7/8 (22)	3/4 (19)

TABLE 2 Minimum distance from edge of gland plate to the center of the conduit / cable entry.

NPT (METRIC)	4" (M100)	3-1/2" (M80)	3" (M75)	2-1/2" (M63)	2" (M50)	1-1/2" (M40)	1-1/4" (M32)	1" (M25)	3/4" (M20)	1/2" (M16)
IN. (MM)	3-1/4 (83)	3 (76)	2-3/4 (70)	2-1/2 (64)	2-1/8 (54)	1-7/8 (48)	1-3/4 (44)	1-1/2 (38)	1-3/8 (35)	1-1/4 (32)

TABLE 3: NEC / CEC minimum wire bending space from inside wall of the enclosure, North America applications only.

SIZE AWG (MM2)	16 (1.5)	14 (2.5)	12 (4)	10 (6)	8 (10)	6 (16)	4 (25)	2 (35)	1/0 (50)	2/0 (70)	3/0 (95)	4/0 (120)
IN. (MM)	1.5 (38)	1.5 (38)	1.5 (38)	1.5 (38)	1.5 (38)	2 (51)	3 (76)	3.5 (89)	5.5 (140)	6 (152)	6.5 (164)	7 (178)

TABLE 4: Punched hole diameters. For additional sizes not shown please contact the factory.

NPT	4"	3-1/2"	3"	2-1/2"	2"	1-1/2"	1-1/4"	1"	3/4"	1/2"
MAX. HOLE DIA. IN. (MM)	4.53 (115.06)	4.03 (102.36)	3.53 (89.66)	2.905 (73.79)	2.405 (61.08)	1.93 (49.2)	1.69 (42.93)	1.345 (34.16)	1.08 (27.4)	.87 (22.09)
METRIC	M100	M80	M75	M63	M50	M40	M32	M25	M20	M16
MAX. HOLE DIA. MM (IN.)	100.7 (3.94)	80.7 (3.15)	75.7 (2.95)	63.7 (2.48)	50.7 (1.97)	40.7 (1.58)	32.7 (1.26)	25.7 (0.98)	20.7 (0.79)	16.7 (0.63)

TABLE 5: Minimum distance of the center line to center line of the conduit / cable entries.

(NPT) [METRIC]	4 [M100]	3 1/2 [M80]	3 [M75]	2 1/2 [M63]	2 [M50]	1 1/2 [M40]	1 1/4 [M32]	1 [M25]	3/4 [M20]	1/2 [M16]
1/2 [M16]	3 5/8 [92mm]	3 3/8 [86mm]	3 1/8 [80mm]	2 3/4 [70mm]	2 1/2 [64mm]	2 1/4 [58mm]	2 1/8 [54mm]	1 7/8 [48mm]	1 3/4 [45mm]	1 5/8 [41mm]
3/4 [M20]	3 3/4 [96mm]	3 1/2 [89mm]	3 1/4 [83mm]	2 7/8 [74mm]	2 5/8 [68mm]	2 3/8 [60mm]	2 1/4 [58mm]	2 [51mm]	1 7/8 [48mm]	
1 [M25]	3 7/8 [99mm]	3 5/8 [92mm]	3 3/8 [86mm]	3 [77mm]	2 3/4 [70mm]	2 1/2 [64mm]	2 3/8 [60mm]	2 1/8 [54mm]		
1 1/4 [M32]	4 1/8 [105mm]	3 7/8 [99mm]	3 1/2 [89mm]	3 1/4 [83mm]	3 [77mm]	2 3/4 [70mm]	2 1/2 [64mm]			
1 1/2 [M40]	4 1/4 [108mm]	4 [102mm]	3 3/4 [96mm]	3 3/8 [86mm]	3 1/8 [80mm]	2 7/8 [73mm]				
2 [M50]	4 3/4 [121mm]	4 1/2 [115mm]	4 [102mm]	3 5/8 [92mm]	3 3/8 [86mm]					
2 1/2 [M63]	4 7/8 [124mm]	4 5/8 [118mm]	4 1/4 [108mm]	3 7/8 [99mm]						
3 [M75]	5 1/4 [134mm]	5 [127mm]	4 5/8 [118mm]							
3 1/2 [M80]	5 3/4 [147mm]	5 1/2 [140mm]								
4 [M100]	6 1/4 [159mm]									

All dimension in. (mm)

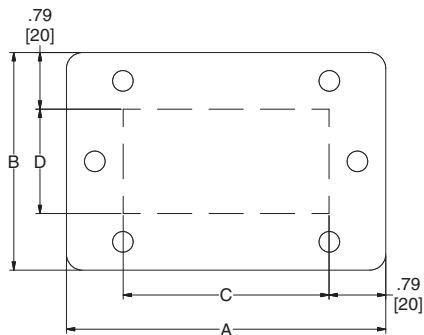


USF / USFC / SJIC(H)6 / SJIC(H) TERMINAL BOXES AND ENCLOSURES

Replacement Gland Plates

Gland plates kits comes with the following:

- Gland plate in either 316 stainless steel or painted carbon steel.
- Mounting screws and retaining washers.
- One piece closed cell silicone gasket.



Catalog Logic

USF - **GP** **12** x **6**
 1 2 3 4

1. Enclosure Series
2. Gland Plate
3. Box Nominal Length or Width
4. Box Nominal Depth

Note: Gland plates not supplied with ground stud / earth connection. If one is required contact the factory for price and special part number.

REPLACEMENT GLAND PLATES

CATALOG NUMBER: 316 STAINLESS STEEL	CATALOG NUMBER PAINTED CARBON STEEL	"A" OVER ALL LENGTH	"B" OVER ALL WIDTH	"C" AREA FOR OPENINGS	"D" AREA FOR OPENINGS
USF-GP12X6	USFC-GP12X6	10.97 [279]	5.74 [146]	9.40 [239]	4.16 [106]
USF-GP12X8	USFC-GP12X8	10.97 [279]	7.74 [197]	9.40 [239]	6.16 [156]
USF-GP12X10	USFC-GP12X10	10.97 [279]	9.74 [247]	9.40 [239]	8.16 [207]
USF-GP16X6	USFC-GP16X6	14.97 [380]	5.74 [146]	13.40 [340]	4.16 [106]
USF-GP16X8	USFC-GP16X8	14.97 [380]	7.74 [197]	13.40 [340]	6.16 [156]
USF-GP16X10	USFC-GP16X10	14.97 [380]	9.74 [247]	13.40 [340]	8.16 [207]
USF-GP20X6	USFC-GP20X6	18.97 [482]	5.74 [146]	17.40 [442]	4.16 [106]
USF-GP20X8	USFC-GP20X8	18.97 [482]	7.74 [197]	17.40 [442]	6.16 [156]
USF-GP20X10	USFC-GP20X10	18.97 [482]	9.74 [247]	17.40 [442]	8.16 [207]
USF-GP20X12	USFC-GP20X12	18.97 [482]	11.74 [298]	17.40 [442]	10.16 [258]
USF-GP24X6	USFC-GP24X6	22.97 [583]	5.74 [146]	21.40 [544]	4.16 [106]
USF-GP24X8	USFC-GP24X8	22.97 [583]	7.74 [197]	21.40 [544]	6.16 [156]
USF-GP24X10	USFC-GP24X10	22.97 [583]	9.74 [247]	21.40 [544]	8.16 [207]
USF-GP24X12	USFC-GP24X12	22.97 [583]	11.74 [298]	21.40 [544]	10.16 [258]
USF-GP24X16	USFC-GP24X16	22.97 [583]	15.74 [400]	21.40 [544]	14.16 [360]
USF-GP24X20	USFC-GP24X20	22.97 [583]	19.74 [501]	21.40 [544]	18.16 [461]
USF-GP30X8	USFC-GP30X8	27.59 [701]	7.74 [197]	26.02 [661]	6.16 [156]
USF-GP30X10	USFC-GP30X10	27.59 [701]	9.74 [247]	26.02 [661]	8.16 [207]
USF-GP30X12	USFC-GP30X12	27.59 [701]	11.74 [298]	26.02 [661]	10.16 [258]
USF-GP30X16	USFC-GP30X16	27.59 [701]	15.74 [400]	26.02 [661]	14.16 [360]
USF-GP30X20	USFC-GP30X20	27.59 [701]	19.74 [501]	33.02 [839]	18.16 [461]
USF-GP36X8	USFC-GP36X8	34.59 [879]	7.74 [197]	33.02 [839]	6.16 [156]
USF-GP36X10	USFC-GP36X10	34.59 [879]	9.74 [247]	33.02 [839]	8.16 [207]
USF-GP36X12	USFC-GP36X12	34.59 [879]	11.74 [298]	33.02 [839]	10.16 [258]
SJIC6-GP0404	SJIC-GP0404	3.74 [95]	3.28 [83]	2.16 [55]	1.71 [43]
SJIC6-GP0604	SJIC-GP0604	5.74 [146]	3.28 [83]	4.16 [106]	1.71 [43]
SJIC6-GP0804	SJIC-GP0804	7.74 [197]	3.28 [83]	6.16 [156]	1.71 [43]
SJIC6-GP1004	SJIC-GP1004	9.74 [247]	3.28 [83]	8.16 [207]	1.71 [43]
SJIC6-GP1005	SJIC-GP1005	9.74 [247]	4.28 [109]	8.16 [207]	2.71 [69]
SJIC6-GP0606	SJIC-GP0606	5.74 [146]	5.28 [134]	4.16 [106]	3.71 [94]
SJIC6-GP0806	SJIC-GP0806	7.74 [197]	5.28 [134]	6.16 [156]	3.71 [94]
SJIC6-GP1006	SJIC-GP1006	9.74 [247]	5.28 [134]	8.16 [207]	3.71 [94]
SJIC6-GP1206	SJIC-GP1206	11.74 [298]	5.28 [134]	10.16 [258]	3.71 [94]
SJIC6-GP1406	SJIC-GP1406	13.74 [349]	5.28 [134]	12.16 [309]	3.71 [94]

KDE DRAIN / BREATHER



Available In

- KDEAL0050 – Alum ½" NPT
- KDEAL0M20 – Alum M20
- KDES60050 – 316SS ½" NPT

- KDES60M20 – 316SS M20
- KDEGF0050 – Plastic ½" NPT
- KDEGF0M20 – Plastic M20

File #2714851

- Class I, Div. 2, Groups A, B, C & D;
- Class I, Zone 1, AEx e IIC Gb & Zone 21, AEx tb IIIC Db
- Class II, Div. 1 & 2, Groups E, F & G;
- Class III, Div 1 & 2 Type 3, 4 & 4x
- Ambient Temperature -55°C to +80°C

- IEx 15.0154X INMETRO (Brazil)
- CML 15ATEX3028X
- IECEX QPS 15.0002X
- ATEX / IEC Ex II 2 G D CE 0518
- Ex e IIC Gb T6
- Ex t IIIC Db T80°C IP66
- Tamb = -55°C To +80°C

ENCLOSURES

USF/USFC/SJIC(H)6/SJIC(H) SERIES

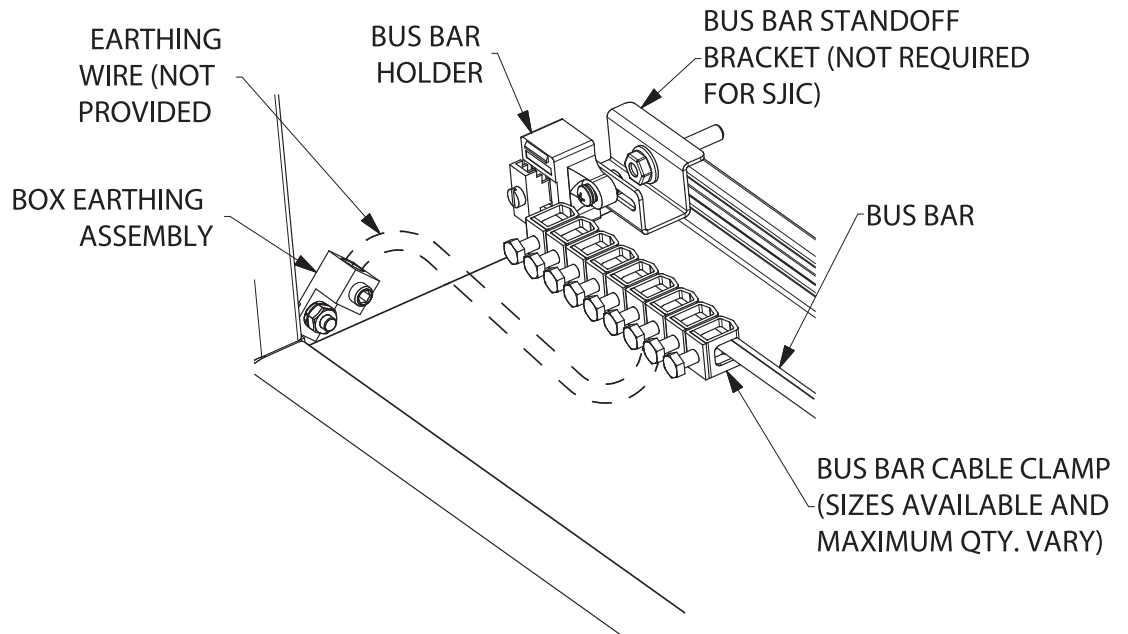


BUS BAR / GROUND BUS OPTION

Description:

- **Bus bar** – Tin plated copper, 10mm wide x 3 mm thick, rated for 140 amperes.
- **Bus clamps** – ZB 4 wire range 0.5 - 6mm² (#20 to #10 AWG)
ZB 10 wire range 1.5 - 10mm² (#16 to #8 AWG)
- **Kit contains** – mounting hardware, mounting brackets, bus bar and bus clamps

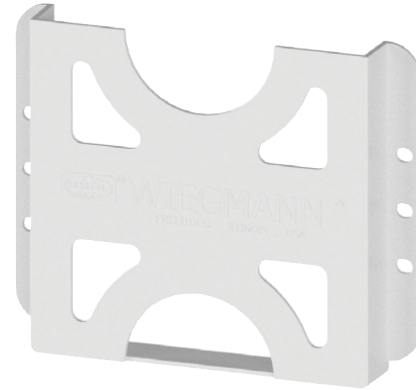
CATALOG NUMBER	CLAMP SIZE	QTY	BOX SERIES / WIDTH
SJIC-GB10N4-26	ZB 4	26	SJIC 10"
SJIC-GB10N10-17	ZB 10	17	
SJIC-GB12N4-36	ZB 4	36	SJIC 12"
SJIC-GB12N10-23	ZB 10	23	
SJIC-GB14N4-45	ZB 4	45	SJIC 14"
SJIC-GB14N10-30	ZB 10	30	
USF-GB12N4-35	ZB 4	35	USF 12"
USF-GB12N10-22	ZB 10	22	
USF-GB16N4-54	ZB 4	54	USF 16"
USF-GB16N10-35	ZB 10	35	
USF-GB18N4-63	ZB 4	63	USF 18"
USF-GB18N10-41	ZB 10	41	
USF-GB20N4-73	ZB 4	73	USF 20"
USF-GB20N10-48	ZB 10	48	
USF-GB24N4-92	ZB 4	92	USF 24"
USF-GB24N10-61	ZB 10	61	
USF-GB30N4-114	ZB 4	114	USF 30"
USF-GB30N10-75	ZB 10	75	



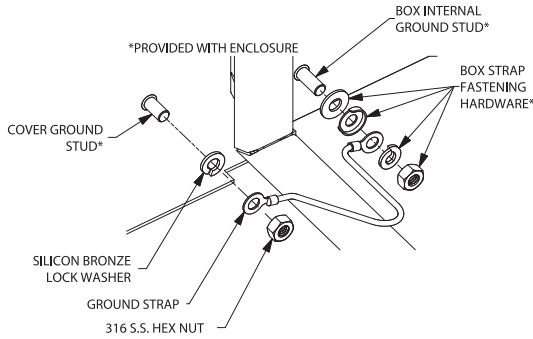


ACCESSORIES

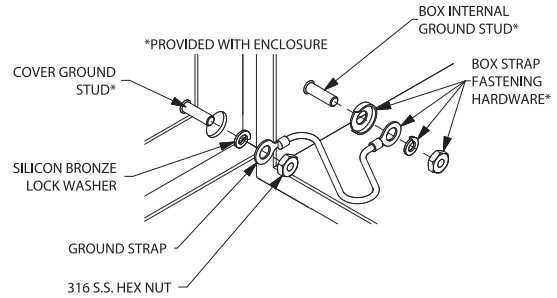
CATALOG NUMBER	DESCRIPTION
USF-DC	Document Door Wallet
USF-CVGRD	Cover Ground (earth) Kit
USF-BOXGRD	Box Ground (earth) Kit
USF-MTGFEET	Mounting Feet, Pack of 4
SJIC-CVGRD	Cover Ground (earth) Kit
SJIC-INTGRD	Box Ground (earth) Kit
SJIC-EXTGRD	External Ground (earth) Kit



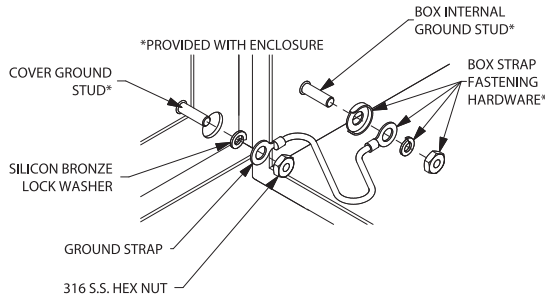
USF-DC



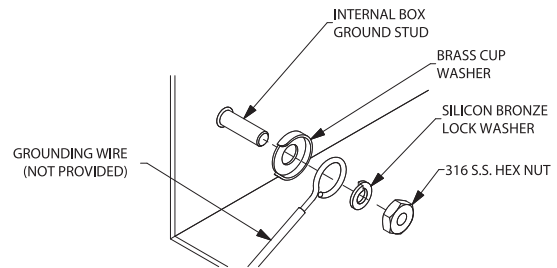
USF-CVGRD



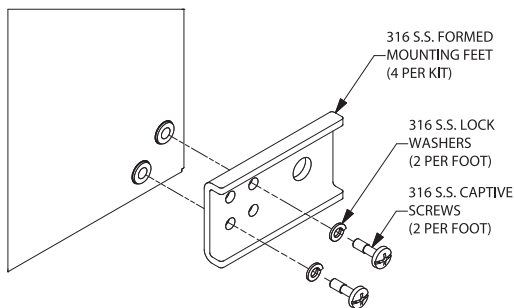
SJIC-CVGRD



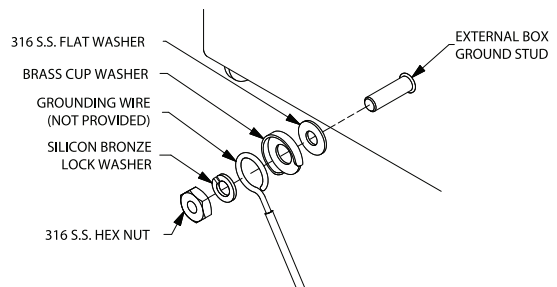
SJIC-CVGRD



SJIC-INTGRD



USF-MTGFEET



SJIC-EXTGRD