



Harsh & Hazardous

**KILLARK**<sup>®</sup>

# EXBLT Series

*for Harsh and Hazardous Environments*



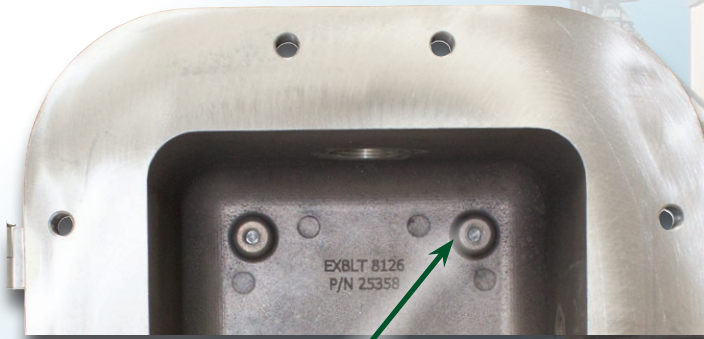
**EXBLITE**



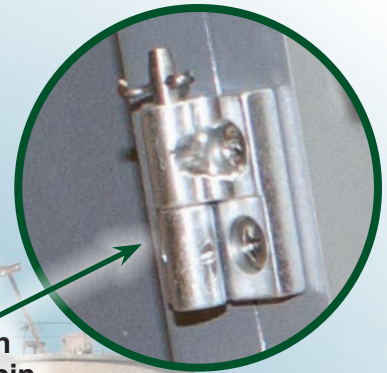


# KILLARK

## JUNCTION BOXES



Predrilled internal mounting pan bosses as standard. Uses same mounting pans as the EXB series

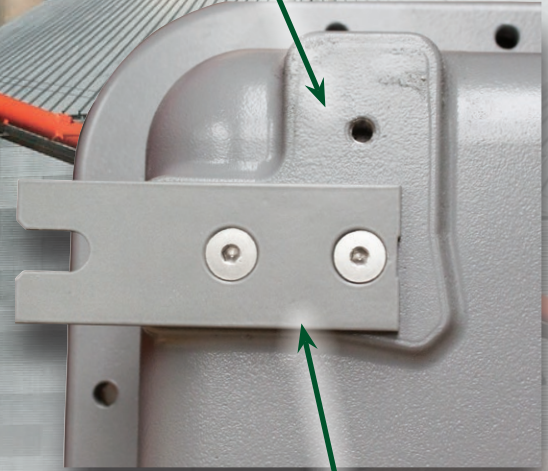


Hinges are extruded aluminum with stainless steel pin and hardware



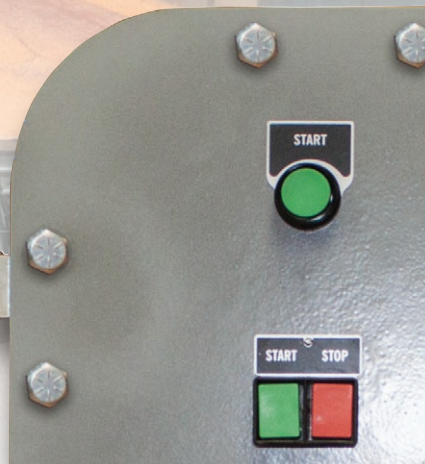
Nitrile (BUNA-N) "O" ring gasket is located inside the bolt circle for wet locations, Type 4 & IP66

Mounting lugs can be rotated 90°



Ductile mounting lugs. Lugs are made of a ductile aluminum alloy to adjust to irregular mounting surfaces without damaging the enclosure. Easily replaced if damaged.

Fewer cover bolts required – faster in and out







## JUNCTION BOXES



## EXBLITE

## FEATURES-SPECIFICATIONS

## Applications

Bolted enclosures for use in areas that are hazardous due to the presence of flammable gases and vapors. Combustible dust, or easy ignitable fibers and flyings. Locations that are corrosive, wet, hose down, dust, dirty, for both hot and cold industrial applications

- Pulp & Paper Mills
  - Breweries
  - Electrical Power Plants
  - Refineries
  - Petrochemical Plants
  - Chemical Plants
  - Wastewater Treatment
  - Used to link electrical wires. Provide access to conductors for maintenance and system expansions
  - Primary circuits for distribution to field control devices.
  - Enclosure to house control stations, meters, relays, motor starters circuit breakers, terminal blocks and other electrical equipment.
  - Enclosures are available blank for field modifications or with factory modifications, options and accessories. See catalog pages \*\*\* -\*\*\* for specific details.
- Grain Facilities
  - Marine, Docks, Ports
  - Coal Handling
  - Off Shore Platforms
  - Pumping Stations
  - Textile manufacturing
  - Food Processing

EXBLT- For North America and for Global Applications by Adding Suffix "CEN".

## Features

- The EXBLTP series is up to 35% light than the EXB Series enclosures.
- Copper free cast / plate aluminum construction. High strength, lighter in weight, highly corrosion resistant.
- Choice of two covers, flat aluminum plate cover, EXBLTP, or the original aluminum sand casts cover, EXBLTC.
- Fewer cover bolts – reduces installation and maintenance time. Offered in Plated Carbon Steel, 316SS and 316SS Tri-Lead for quicker access.
- Gasketed cover flange as standard. Nitrile (BUNA-N) "O" ring gasket is located inside the bolt circle to prevent water from seeping into the enclosure.
- Ductile mounting lugs. Lugs are made of a ductile aluminum alloy to adjust to irregular mounting surfaces without damaging the enclosure. EXBLTs 8x12x6x and larger supplied with bi-directional mounting pads. Lugs can installed either horizontal or vertical by the factory or in the field. Easily replaced if damage does occur.
- Hinges supplied as standard on the 6x12x4, 6x12x6 8x12x6 and larger as a standard. Smaller sizes can be ordered with hinges by adding SU2 to the catalog number. Hinges can be mounted on any of the 4 sides.
- Enclosures can be drilled and tapped with conduit openings up to 2" NPT or M63 openings, factory or field.

## ATEX &amp; IEC Ex

II 2 G Ex db IIB+H2 T6 CE 0518

II 2 D Ex tb IIIC T85°C IP66

Ta -50°C to + 70°C

IECEx QPS 17.0013U (pending)

IECEx QPS 17.0014 (pending)

CML17 ATEX (pending)

CML17 ATEX (pending)



## NORTH AMERICA

Class I, Div. 1 & 2, Groups B, C & D;

Class I, Zone 1 & 2, Groups IIB+H2 IIA;

Class II, Div. 1 & 2, Groups E, F & G;

Class III, Encl. Type 4 & 4X

UL Ta = -25°C to +60°C

CSA Ta = -50°C to + 60°C

UL Classified File E83969

UL Listed Files E105414 & E12379

CSA Certified File LR11716

- Covers both plate and cast can be drilled and tapped for G Series control operators openings and EXH disconnect handles, factory or field. The original aluminum sand casts cover, EXBLTC, can be provided with the GLXR rectangular viewing windows and the GL round threaded viewing windows.
- Cover flanges supplied with recessed notches for prying the covers open without damaging the ground flame path.
- The mounting pan bosses are pre-drilled for the factory or field installation of the optional back pans

## Material/Finish

- **Box:** Molded from 356-T6 copper free aluminum, less than 4/10 of 1% copper alloy and less than 6% magnesium.
- **Cover:** EXBLTP plate cover is made of 6061-T6 aluminum alloy.
- **Cover:** EXBLTC cast from 310 copper free aluminum, less than 4/10 of 1% copper alloy and less than 6% magnesium.
- **Bolts:** Plated carbon steel.
- **Hinges:** Extruded aluminum with stainless steel pin and hardware.
- **Optional:** Mounting pans sheet aluminum 6061-T6 or 5052-H34.
- **Optional:** Viewing windows tempered soda lime glass.
- **Finish:** Enclosures supplied natural without paint.

## Notes:

Conduits must be sealed within 18" for Group B applications.

Type 4X with suffix N4X & N4XTL



MODIFICATIONS AND CATALOG LOGIC

CATALOG NUMBER	NOMINAL ENCLOSURE INSIDE DIMENSIONS W" L" D" (MM)	MAXIMUM SIZES - NPT / METRIC	OPTIONAL MOUNTING PAN NUMBER	MAXIMUM NUMBER OF OPERATORS	EXBLTP WEIGHT LBS (KGS)	EXBLTC WEIGHT LBS (KGS)	EXBLTP HINGES	EXBLTC HINGES
EXBLT*-664 N4	6x6x4 (152x152x102)	2" / M63	7997-5	2 rows of 2 = 4	18.2 (8.3)	20.4 (9.3)	HINGE-12L	HINGE-12L
EXBLT*-684 N4	6x8x4 (152x203x102)	2" / M63	7997-1	2 rows of 3 = 4	21.1 (9.6)	22.7 (10.3)	HINGE-12L	HINGE-12L
EXBLT*-686 N4	6x8x6 (152x203x152)	2" / M63	7997-1	2 rows of 3 = 4	23.7 (10.8)	25.3 (11.5)	HINGE-12L	HINGE-12L
EXBLT*-6124 N4	6x12x4 (152x305x102)	2" / M63	7997-6	4 rows of 2 = 8	29.2 (13.2)	39.2 (17.8)	HINGE-12L	HINGE-12L
EXBLT*-6126 N4	6x12x6 (152x305x152)	2" / M63	7997-6	4 rows of 2 = 8	32.6 (14.8)	42.6 (19.3)	HINGE-12L	HINGE-12L
EXBLT*-886 N4	8x8x6 (203x203x152)	2" / M63	7996-1	3 rows of 3 = 9	27.9 (12.7)	32.6 (17.8)	HINGE-12L	HINGE-12L
EXBLT*-8104 N4	8x10x4 (203x254x102)	2" / M63	7996-2	4 rows of 3 = 12	28.6 (13)	35.5 (16.1)	HINGE-12L	HINGE-12L
EXBLT*-8106 N4	8x10x6 (203x254x152)	2" / M63	7996-2	4 rows of 3 = 12	31.9 (14.5)	38.8 (17.6)	HINGE-12L	HINGE-12L
EXBLT*-8126 N4	8x12x6 (203x305x152)	2" / M63	17619	4 rows of 3 = 12	46.9 (21.3)	58.3 (26.4)	HINGE-12L	HINGE-11L
EXBLT*-8128 N4	8x12x8 (203x305x203)	2" / M63	17619	4 rows of 3 = 12	51.6 (23.4)	63 (28.6)	HINGE-12L	HINGE-11L
EXBLT*-9116 N4	9x11x6 (229x280x152)	2" / M63	25803	4 rows of 3 = 12	36.2 (16.4)	42.5 (19.3)	HINGE-12L	HINGE-12L
EXBLT*-10106 N4	10x10x6 (254x254x152)	2" / M63	17618	3 rows of 3 = 9	48.8 (22.1)	64.5 (29.3)	HINGE-12L	HINGE-11L
EXBLT*-10108 N4	10x10x8 (254x254x203)	2" / M63	17618	3 rows of 3 = 9	53.5 (24.3)	69.2 (31.4)	HINGE-12L	HINGE-11L
EXBLT*-10146 N4	10x14x6 (254x356x152)	2" / M63	17617	5 rows of 3 = 15	59.7 (27.07)	77.9 (35.3)	HINGE-12L	HINGE-11L
EXBLT*-10148 N4	10x14x8 (254x356x203)	2" / M63	17617	5 rows of 3 = 15	65.3 (29.6)	83.5 (37.9)	HINGE-12L	HINGE-11L
EXBLT*-12126 N4	12x12x6 (305x305x152)	2" / M63	7988-1	4 rows of 4 = 16	55 (25)	71.8 (32.6)	HINGE-12L	HINGE-11L
EXBLT*-12128 N4	12x12x6 (305x305x203)	2" / M63	7988-1	4 rows of 4 = 16	60.3 (27.4)	77.1 (35)	HINGE-12L	HINGE-11L

Add "P" for aluminum plate cover. Add "C" for sand cast cover.

Mounting Pan - Order mounting pan as separate item and specify if factory of field installed.

Note: For Group B applications all conduit must be sealed within 18" of enclosure wall.

Note: For ATEX IEC Ex applications all conduit must be sealed at the wall of the enclosure.

For ATEX and IEC Ex Certifications, add suffix "CEN"

EXBLT P - 8 10 6 N4 \*\*\*  
 1 2 3 4 5 6 7

- |  |   |
|--|---|
| <p><b>1. Box Series Constant</b><br/>EXB LITE</p> <p><b>2. Cover Type</b><br/>P = Flat Aluminum Plate<br/>C = Sand Cast Aluminum</p> <p><b>3. Width Nominal</b></p> <p><b>4. Length Nominal</b></p> <p><b>5. Depth Nominal</b></p> | <p><b>6. Enviromental Rating</b><br/>N4 = Type 4 Steel external hardware<br/>N4X = Type 4X Stainless steel external hardware<br/>N4TL = Type 4X Tri-lead stainless steel external hardware<br/>N4CEN = Type 4X, IP66 ATEX &amp; IEC Ex Certifications</p> <p><b>7. Suffixes ++</b><br/>SU3-B-4X = Type 4X drain &amp; breather installed Groups BCD<br/>SU3-ATEX = ATEX IEC Ex drain &amp; breather installed Groups B &amp; Ex d+IIB<br/>SU2 = Install hinges - EXB-8106 and smaller<br/>SU9 = Special paint<br/>SU93 = Do not paint</p> <p>++ Additional suffixes are available</p> |
|--|---|

# ENCLOSURES

EXBLT SERIES



## REPLACEMENT PARTS

ENCLOSURE CATALOG NUMBER	COVER GASKET	MOUNTING LUG KIT (Contains four mounting lugs and hardware)	REPLACEMENT PARTS					
			COVER BOLTS – SOLD PER EACH					
			NO. OF BOLTS PER ENCLOSURE	CARBON STEEL “N4”	316 STAINLESS STEEL “N4X”	316 STAINLESS STEEL TRI-LEAD PLATE COVERS “N4XTL”	316 STAINLESS STEEL TRI-LEAD CAST COVERS “N4XTL”	ATEX IEC EX 316 STAINLESS STEEL “N4CEN”
EXBLT*-664 N4	EXB66RG	EXB-MTL1	8	0725115B	25952BAAB	xxxxx	xxxxx	20790AAB
EXBLT*-684 N4	EXB68RG	EXB-MTL1	10	0725115B	25952BAAB	xxxxx	xxxxx	20790AAB
EXBLT*-686 N4	EXB68RG	EXB-MTL1	10	0725115B	25952BAAB	xxxxx	xxxxx	20790AAB
EXBLT*-6124 N4	EXB612RG	EXB-MTL1	12	0720361B	25952AAAB	25904AAAB	17339AAAB	20790BAAB
EXBLT*-6126 N4	EXB612RG	EXB-MTL1	12	0720361B	25952AAAB	25904AAAB	17339AAAB	20790BAAB
EXBLT*-886 N4	EXB88RG	EXB-MTL1	12	0725115B	25952BAAB	xxxxx	xxxxx	20790AAB
EXBLT*-8104 N4	EXB810RG	EXB-MTL1	14	0725115B	25952BAAB	xxxxx	xxxxx	20790AAB
EXBLT*-8106 N4	EXB810RG	EXB-MTL1	14	0725115B	25952BAAB	xxxxx	xxxxx	20790AAB
EXBLT*-8126 N4	EXB812RG	EXB-MTL1	12	0720361B	25952AAAB	25904AAAB	17339AAAB	20790BAAB
EXBLT*-8128 N4	EXB812RG	EXB-MTL1	12	0720361B	25952AAAB	25904AAAB	17339AAAB	20790BAAB
EXBLT*-9116 N4	EXB911RG	EXB-MTL1	14	0725115B	25952BAAB	xxxxx	xxxxx	20790AAB
EXBLT*-10106 N4	EXB1010RG	EXB-MTL2	12	0720361B	25952AAAB	25904AAAB	17339AAAB	20790BAAB
EXBLT*-10108 N4	EXB1010RG	EXB-MTL2	12	0720361B	25952AAAB	25904AAAB	17339AAAB	20790BAAB
EXBLT*-10146 N4	EXB1014RG	EXB-MTL2	16	0720361B	25952AAAB	25904AAAB	17339AAAB	20790BAAB
EXBLT*-10148 N4	EXB1014RG	EXB-MTL2	16	0720361B	25952AAAB	25904AAAB	17339AAAB	20790BAAB
EXBLT*-12126 N4	EXB1212RG	EXB-MTL2	16	0720361B	25952AAAB	25904AAAB	17339AAAB	20790BAAB
EXBLT*-12128 N4	EXB1212RG	EXB-MTL2	16	0720361B	25952AAAB	25904AAAB	17339AAAB	20790BAAB

MODIFICATIONS	
SUFFIX NUMBER	DESCRIPTION
N4CEN	ATEX & IEC Ex Certifications, IP66 Type 4X
N4X	Stainless steel external hardware for Type 4X
N4XTL	Tri-lead stainless steel external hardware for Type 4X
KIT-251	100 amp ground lug
KIT-252	200 amp ground lug
SU3B-QA	cCSAus, ATEX, IEC Ex drain & breather installed Class I Groups B & Ex d IIB+H2, Type 4, 4X, IP66
SU3B-4X	Drain & breather installed Class I Groups B, Type 4, 4X
SU2	Install hinges - EXB-8106 and smaller.
SU14	Fungus Proof Internal
SU9	Special paint
SU93	Do not paint

### Hinges

Hinges are provided as a standard on EXBLT\*-6124, EXBLT\*-6126 and sizes EXBLT\*-8126 and larger. See chart for replacement hinge catalog number. Sold in sets of (2).

### “G” Series Operators

The EXBLT\* uses the GO Long Style operators.

### Touch-Up Paint

The touch-up paint comes in a 12 oz aerosol can.

Wet lacquer silver gray touch-up paint: KTPALS.

Epoxy powder gray touch-up paint: KTPEPG.

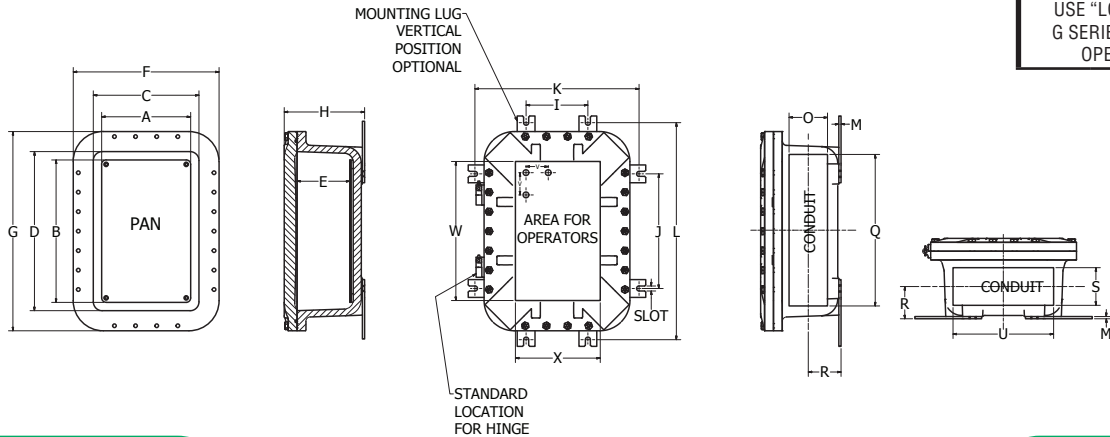


**DIMENSIONS**

ENCLOSURE CATALOG NUMBER	INTERNAL DIMENSIONS - INCHES (MM)						EXTERNAL DIMENSIONS - INCHES (MM)			
	PAN		AVAILABLE EQUIPMENT SPACE				F	G	H ("P" PLATE)	H ("C" CAST)
	A	B	C	D	E ("P" PLATE)	E ("C" CAST)				
EXBLT-664 N4	5 (172)	5 (172)	6 (152)	6 (152)	4 (102)	4.25 (108)	10.32 (262)	10.32 (262)	5.94 (151)	6.18 (157)
EXBLT-684 N4	5 (172)	7 (178)	8 (203)	6 (152)	4 (102)	4.32 (110)	10.25 (260)	12.25 (311)	5.88 (149)	6.13 (156)
EXBLT-686 N4	5 (172)	7 (178)	8 (203)	6 (152)	6 (152)	6.32 (160)	10.25 (260)	12.25 (311)	7.88 (200)	8.13 (206)
EXBLT-6124 N4	5 (172)	11 (279)	12.25 (311)	6.25 (159)	4 (102)	4.56 (116)	10.69 (272)	16.69 (424)	5.88 (149)	6.75 (171)
EXBLT-6126 N4	5 (172)	11 (279)	12.25 (311)	6.25 (159)	6 (152)	6.56 (167)	10.69 (272)	16.69 (424)	7.88 (200)	8.75 (222)
EXBLT-886 N4	7 (178)	7 (178)	8 (203)	8 (203)	6 (152)	6.16 (156)	12.32 (313)	12.32 (313)	7.94 (202)	8.34 (212)
EXBLT-8104 N4	7 (178)	9 (229)	10 (254)	8 (203)	4 (102)	4.18 (106)	12.32 (313)	14.32 (364)	5.94 (151)	6.53 (166)
EXBLT-8106 N4	7 (178)	9 (229)	10 (254)	8 (203)	6 (152)	6.18 (157)	12.32 (313)	14.32 (364)	7.94 (202)	8.53 (217)
EXBLT-8126 N4	7 (178)	11 (279)	11 (279)	9 (229)	6 (152)	6.6 (167)	13.25 (337)	17.25 (438)	8 (203)	8.88 (225)
EXBLT-8128 N4	7 (178)	11 (279)	12.5 (318)	8.5 (216)	8 (203)	8.6 (218)	13.25 (337)	17.25 (438)	10 (254)	10.88 (276)
EXBLT-9116 N4	8 (203)	10 (254)	12.5 (318)	8.5 (216)	6 (152)	6.18 (157)	13.32 (338)	15.32 (389)	7.94 (202)	8.53 (217)
EXBLT-10106 N4	9 (229)	9 (229)	10.5 (267)	10.5 (267)	6 (152)	6.41 (163)	15.25 (387)	15.25 (387)	8.18 (208)	9.13 (232)
EXBLT-10108 N4	9 (229)	9 (229)	10.5 (267)	10.5 (267)	8 (203)	8.41 (214)	15.25 (387)	15.25 (387)	10.18 (259)	11.13 (284)
EXBLT-10146 N4	9 (229)	13 (330)	14.5 (368)	10.5 (267)	6 (152)	6.22 (158)	15.25 (387)	19.25 (489)	8.18 (208)	9.13 (232)
EXBLT-10148 N4	9 (229)	13 (330)	14.5 (368)	10.5 (267)	8 (203)	8.22 (209)	15.25 (387)	19.25 (489)	10.18 (259)	11.13 (284)
EXBLT-12126 N4	10.5 (267)	10.5 (267)	11.87 (301)	11.87 (301)	6 (152)	6.3 (160)	16.38 (416)	16.38 (416)	8.18 (208)	9.06 (230)
EXBLT-12128 N4	10.5 (267)	10.5 (267)	11.87 (301)	11.87 (301)	8 (203)	8.3 (211)	16.38 (416)	16.38 (416)	10.18 (259)	11.06 (281)

ENCLOSURE CATALOG NUMBER	MOUNTING DIMENSIONS - INCHES (MM)						CONDUIT AREA - INCHES (MM)					OPERATOR AREA SPECIFICATION		
	I	J	K	L	M	SLOT WIDTH	SIDE WALL		CENTER	TOP & BOTTOM WALL		V	W	X
							O	Q	R	S	U			
EXBLT-664 N4	N/A	4 (1002)	7.88 (200)	N/A	0.19 (5)	0.44 (11)	2.81 (71)	4.72 (120)	2.78 (71)	2.81 (71)	4.72 (120)	2.5 (63)	5 (127)	5 (127)
EXBLT-684 N4	N/A	4 (1002)	7.88 (200)	N/A	0.19 (5)	0.44 (11)	2.81 (71)	6.72 (171)	2.78 (71)	2.81 (71)	4.72 (120)	2.5 (63)	7 (178)	5 (127)
EXBLT-686 N4	N/A	4 (1002)	7.88 (200)	N/A	0.19 (5)	0.44 (11)	4.81 (122)	6.59 (167)	3.78 (96)	4.81 (122)	4.59 (167)	2.5 (63)	7 (178)	5 (127)
EXBLT-6124 N4	N/A	7.82 (199)	7.88 (200)	N/A	0.19 (5)	0.44 (11)	2.81 (71)	10.97 (279)	2.72 (69)	2.81 (71)	4.97 (126)	2.5 (63)	11 (279)	5 (127)
EXBLT-6126 N4	N/A	7.82 (199)	7.88 (200)	N/A	0.19 (5)	0.44 (11)	4.81 (122)	10.84 (275)	3.72 (94)	4.81 (122)	4.84 (123)	2.5 (63)	11 (279)	5 (127)
EXBLT-886 N4	N/A	6 (152)	9.88 (251)	N/A	0.19 (5)	0.44 (11)	4.81 (122)	6.56 (167)	3.78 (96)	4.81 (122)	6.56 (167)	2.5 (63)	7 (178)	7 (178)
EXBLT-8104 N4	N/A	8 (203)	9.88 (251)	N/A	0.19 (5)	0.44 (11)	2.81 (71)	8.56 (217)	2.78 (71)	2.81 (71)	6.56 (167)	2.5 (63)	9 (229)	7 (178)
EXBLT-8106 N4	N/A	8 (203)	9.88 (251)	N/A	0.19 (5)	0.44 (11)	4.81 (122)	8.56 (217)	3.78 (96)	4.81 (122)	6.56 (167)	2.5 (63)	9 (229)	7 (178)
EXBLT-8126 N4	3.82 (97)	7.82 (199)	10.38 (264)	14.38 (365)	0.19 (5)	0.44 (11)	3.94 (100)	10.13 (257)	3.91 (99)	3.94 (100)	6.13 (156)	2.5 (63)	11 (279)	7 (178)
EXBLT-8128 N4	3.82 (97)	7.82 (199)	10.38 (264)	14.38 (365)	0.19 (5)	0.44 (11)	5.94 (151)	9.97 (253)	4.91 (125)	5.94 (151)	5.97 (152)	2.5 (63)	11 (279)	7 (178)
EXBLT-9116 N4	N/A	7.5 (191)	10.88 (276)	N/A	0.19 (5)	0.44 (11)	4.81 (122)	9.56 (243)	3.66 (93)	4.81 (122)	7.56 (192)	2.5 (63)	10 (254)	8 (203)
EXBLT-10106 N4	4.94 (125)	4.94 (125)	12.94 (329)	12.94 (329)	0.25 (6)	0.56 (14)	3.94 (100)	8.13 (206)	4.09 (104)	3.94 (100)	8.13 (206)	2.5 (63)	9 (229)	9 (229)
EXBLT-10108 N4	4.94 (125)	4.94 (125)	12.94 (329)	12.94 (329)	0.25 (6)	0.56 (14)	5.94 (151)	7.97 (202)	5.09 (129)	5.94 (151)	7.97 (202)	2.5 (63)	9 (229)	9 (229)
EXBLT-10146 N4	4.94 (125)	8.94 (227)	12.94 (329)	16.94 (430)	0.25 (6)	0.56 (14)	3.94 (100)	12.13 (308)	4.09 (104)	3.94 (100)	8.13 (206)	2.5 (63)	13 (330)	9 (229)
EXBLT-10148 N4	4.94 (125)	8.94 (227)	12.94 (329)	16.94 (430)	0.25 (6)	0.56 (14)	5.94 (151)	11.97 (304)	5.09 (129)	5.94 (151)	7.97 (202)	2.5 (63)	13 (330)	9 (229)
EXBLT-12126 N4	6.94 (176)	6.94 (176)	14.94 (379)	14.94 (379)	0.25 (6)	0.56 (14)	3.94 (100)	9.5 (241)	4.09 (104)	3.94 (100)	9.5 (241)	2.5 (63)	10 (254)	10 (254)
EXBLT-12128 N4	6.94 (176)	6.94 (176)	14.94 (379)	14.94 (379)	0.25 (6)	0.56 (14)	5.94 (151)	9.34 (237)	5.09 (129)	5.94 (151)	9.34 (237)	2.5 (63)	10 (254)	10 (254)

USE "LONG" STYLE G SERIES CONTROL OPERATORS







# Harsh & Hazardous Enclosures from KILLARK

## BOLTED ENCLOSURES AND SCREW COVER BOXES TO MEET THE DEMANDS FOR HARSH AND HAZARDOUS LOCATIONS, BOTH ON SHORE AND OFF SHORE APPLICATIONS AROUND THE GLOBE

*When the need arises for a classified enclosure for use in locations that are hazardous, both explosion proof and flame proof, corrosive, wet, hose down, dust, dirty, under both severe hot and cold ambient conditions, Killark enclosures are the perfect solution. Offered in a wide variety of styles and sizes of bolted enclosures, screw cover square body and screw cover round body.*

### ENCLOSURES QUICK SELECTION



EXBLT Series is a family of lighter weight enclosures, up to 35% lighter than the EXB legacy series. 17 sizes, ranging from 6x6x4 (152x152x102mm) through 12x12x8 (304x304x203mm). IECEx / ATEX / CSA / UL Certifications. Ambient temperatures -50°C to +70°C. Copper free aluminum construction.

**Class I Groups BCD, Class I Zone 1 Groups IIB+H2, Class I Class II EFG, Ex db IIB+H2, Ex tb IIIC Type 4X IP66**



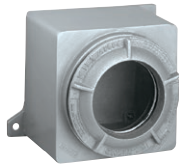
EXB Series 40 sizes, ranging from 6x6x4 (152x152x102mm) through 24x36x10 (610x914x254mm). IECEx / ATEX / CSA / UL Certifications. Copper free cast aluminum construction. Gasketed flange with Nitrile "O" ring. Ductile bi-direction bolt on mounting lugs. Fewer cover bolts.

**Class I Groups BCD, Class I Zone 1 Groups IIB+H2, Class I Class II EFG, Ex db IIB+H2, Ex tb IIIC Type 4X IP66**



B7E Series 15 sizes, ranging from 6.5x13.5x6.7 (152x152x102mm) through 15.5x57.5x9.3 (610x914x254mm). CSA / UL Certifications. Copper free cast aluminum construction. Gasketed flange with Nitrile "O" ring. Ductile bolt on mounting lugs, easily replaced if damaged. Quick release captive cover bolts.

**Class I Groups BCD, Class I Zone 1 Groups IIB+H2, Class I Class II EFG, Type 4X IP66**



GR Series is a family of compact square or rectangular enclosures with threaded screw type covers. 8 sizes, ranging from 4.6x4.6x4 (117x117x102mm) through 11x12x16 (279x304x406mm). IECEx / ATEX / CSA / UL Certifications. Available with blank, lens and dome covers. Copper free aluminum construction.

**Class I Groups BCD, Class I Zone 1 Groups IIB+H2, Class I Class II EFG, Ex db IIB+H2, Ex tb IIIC Type 4X IP66**



HK Series is a family of round body instrumentation enclosures with threaded screw type covers. 3 box sizes, 4 depths blank covers and 4 depths of lens covers IECEx / ATEX / CSA / UL Certifications. Copper free aluminum construction. Ambient temperatures -60°C to +70°C

**Class I Groups BCD, Class I Zone 1 Groups IIB+H2, Class I Class II EFG, Ex db IIB+H2, Ex tb IIIC Type 4X IP66**



SIRA / DEMKO IEx INMETRO QPS/CML

HKSB-EXBLT 01-18 © Killark, 2018

**KILLARK®**

**Hubbell Killark**

3940 Dr. Martin Luther King Drive • St. Louis, MO 63113

Phone: (314) 531-0460 • Fax: (314) 531-7164

www.hubbell-killark.com



**Harsh & Hazardous**